

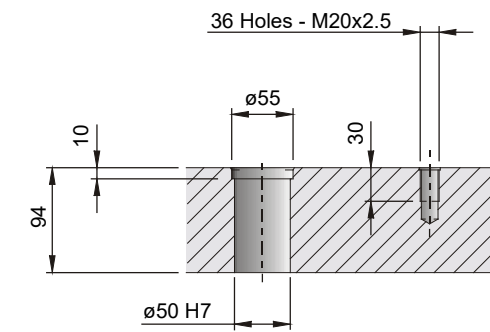
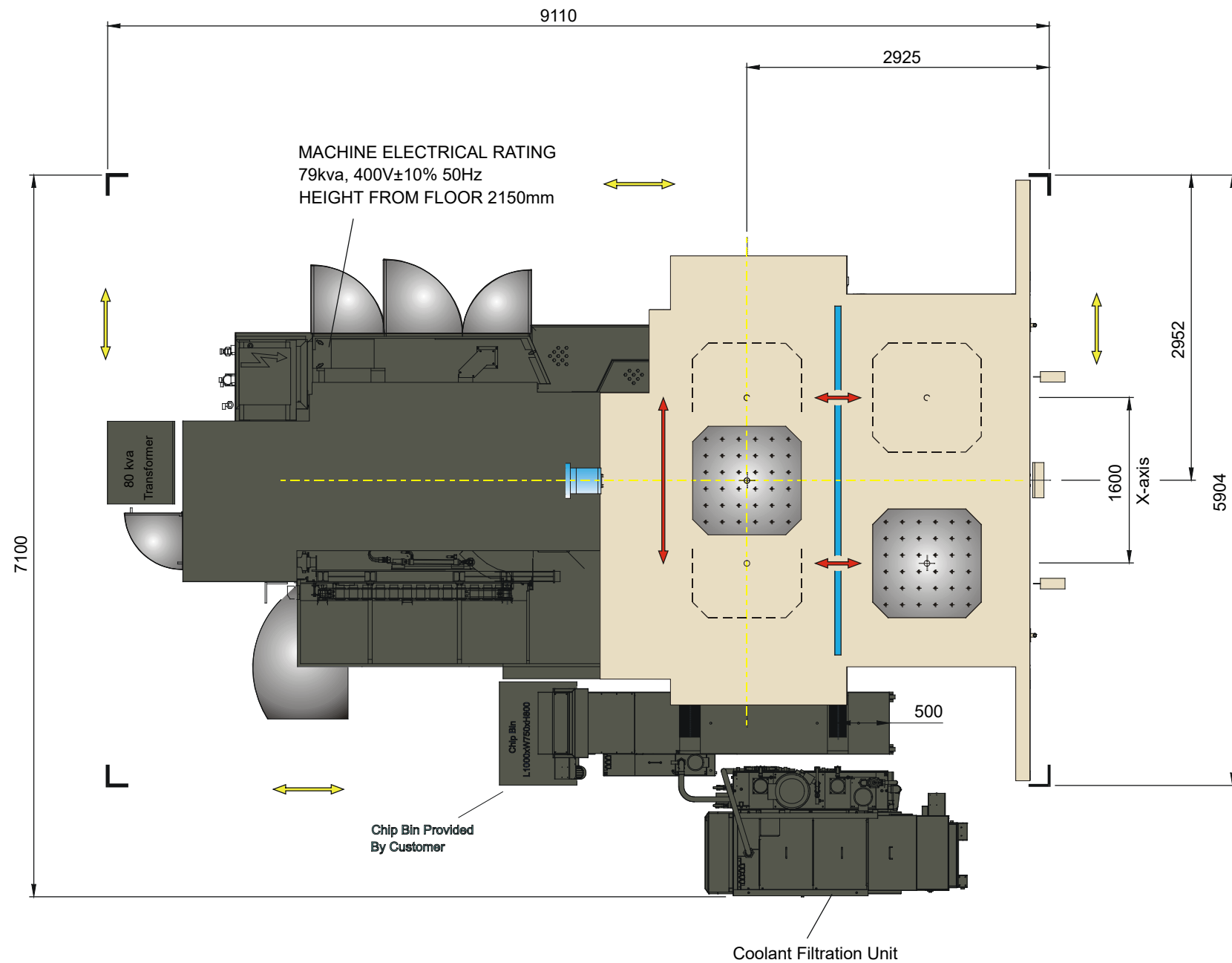
- Notes :-
1. Machine floor space shown, does not include access space for maintenance purposes. Allow suitable access when siting the machine.
  2. Operator working platform to be provided by the customer if required.
  3. Drain tank and filter regulators....etc to be inspected and fully maintained daily.

TOYODA Machinery & Engineering GmbH **TOYODA**  
 Bischofstraße 118  
 D-47809 Krefeld-Oppum  
 Telefon +49(0) 2151-5188-300  
 Telefax +49(0) 2151-5188-333

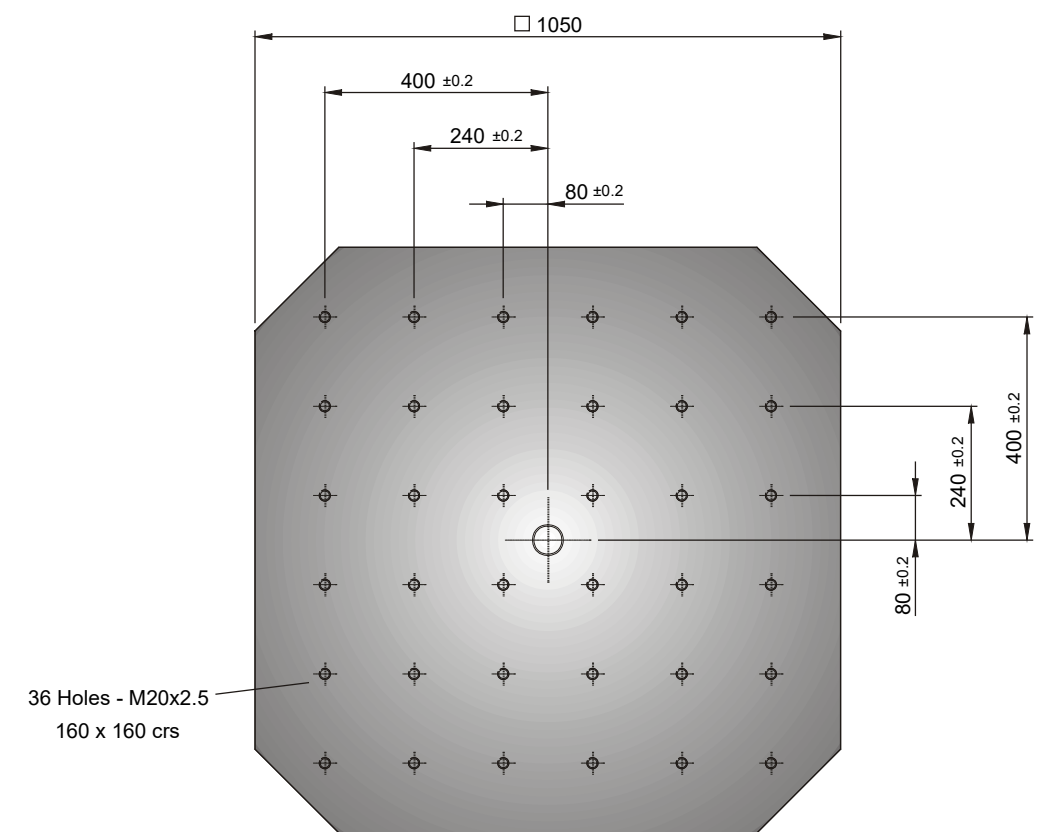
**(C)** This drawing is the property of TOYODA MACHINE WORKS Ltd. No part of this drawing or its contents shall be disclosed to any third party without prior permission of TOYODA MACHINE WORKS Ltd.

**TOYODA FH100S**  
**With 60 TOOL MAGAZINE**

Date	
Dwg. No.	



Part Section Through Pallet Centre Location Hole



Workpiece Pallet Detail

Max. Workpiece Swing = 1600mm

Max. Workpiece Height = 1550mm

Max. Workpiece Weight = 3000 kg

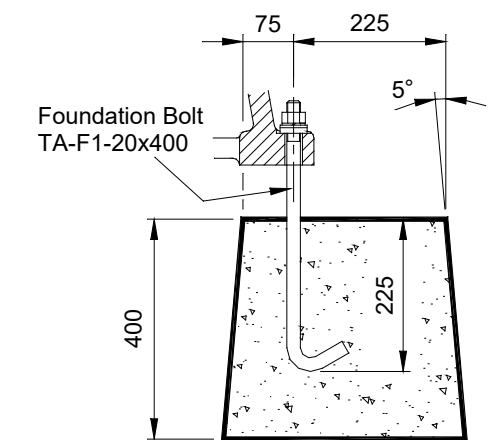
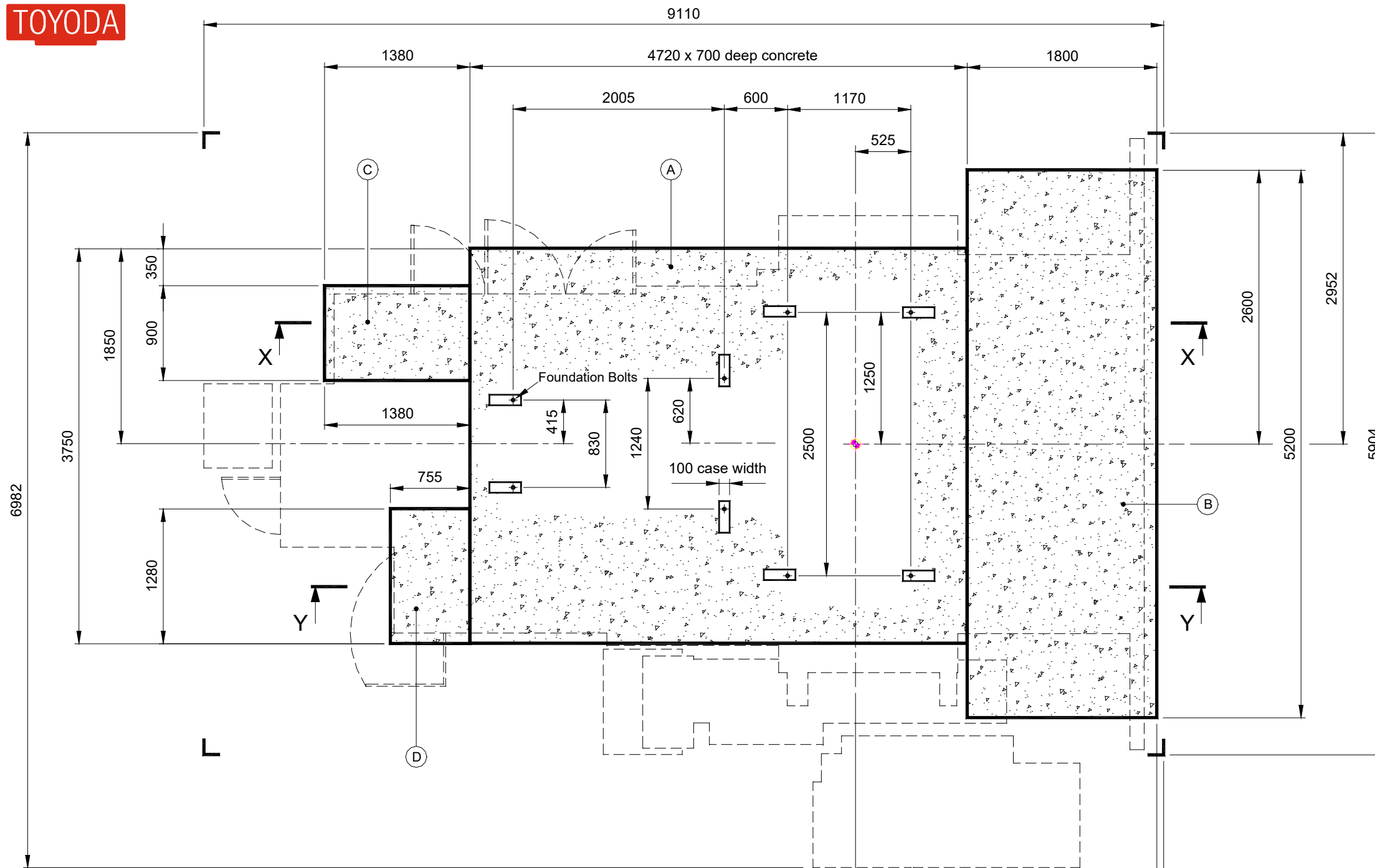
Notes :-

1. Machine floor space shown, does not include access space for maintenance purposes. Allow suitable access when siting the machine.

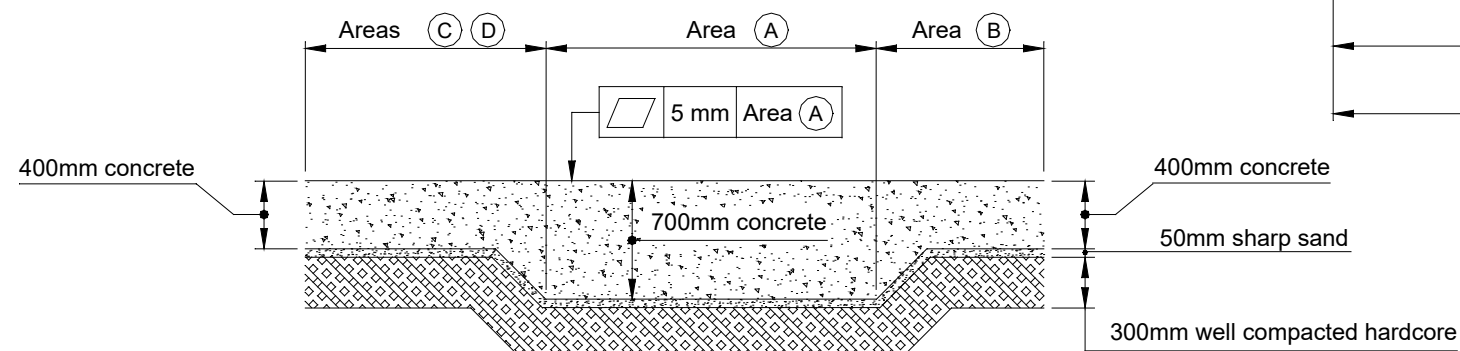
Access required where shown thus

2. Operator working platform to be provided by the customer if required.

3. Drain tank and filter regulators....etc to be inspected and fully maintained daily.



8-off, Foundation Bolt Locations  
 Case out main foundation and fill with mortar  
 after siting the machine and preliminary levelling



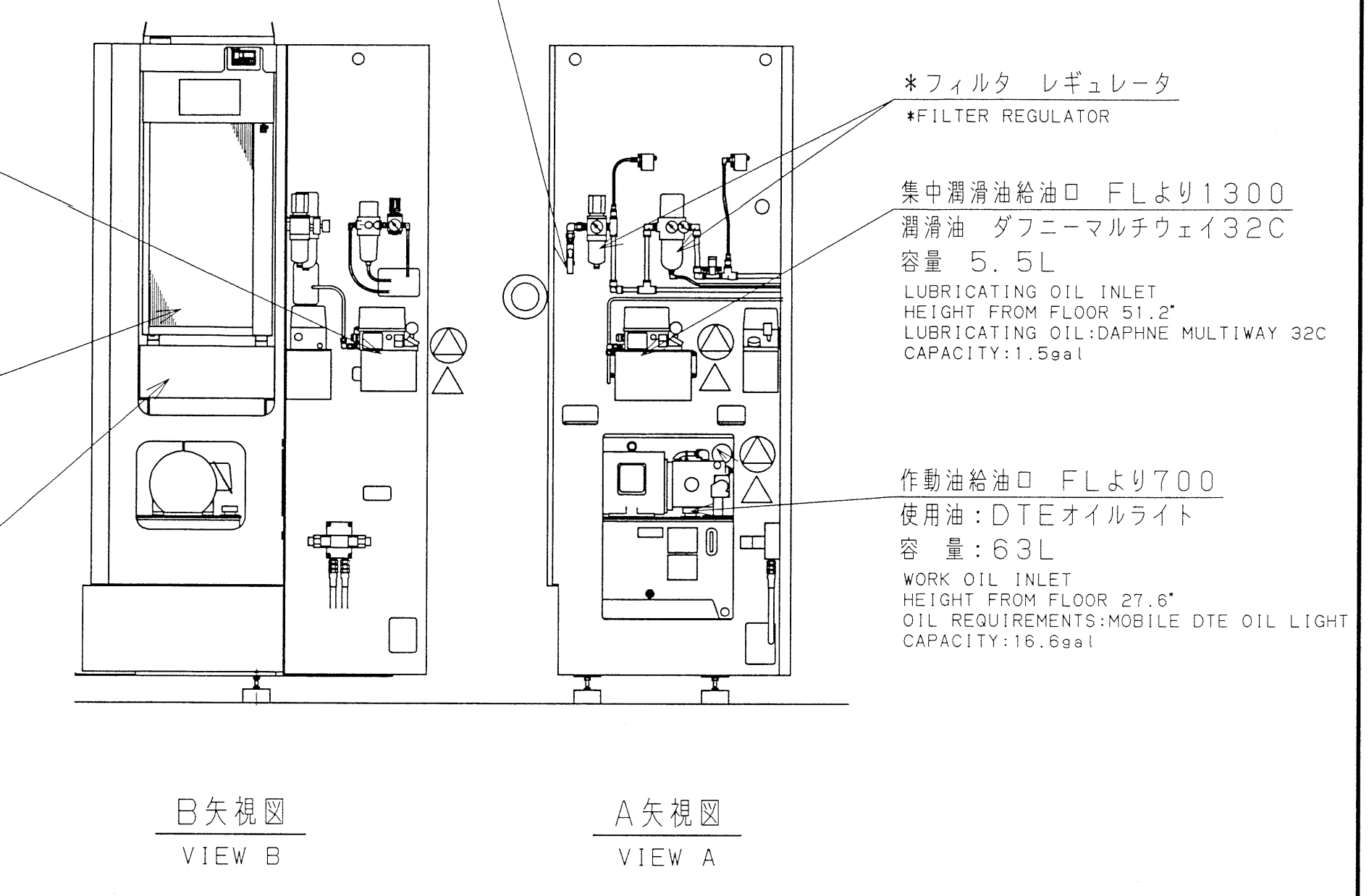
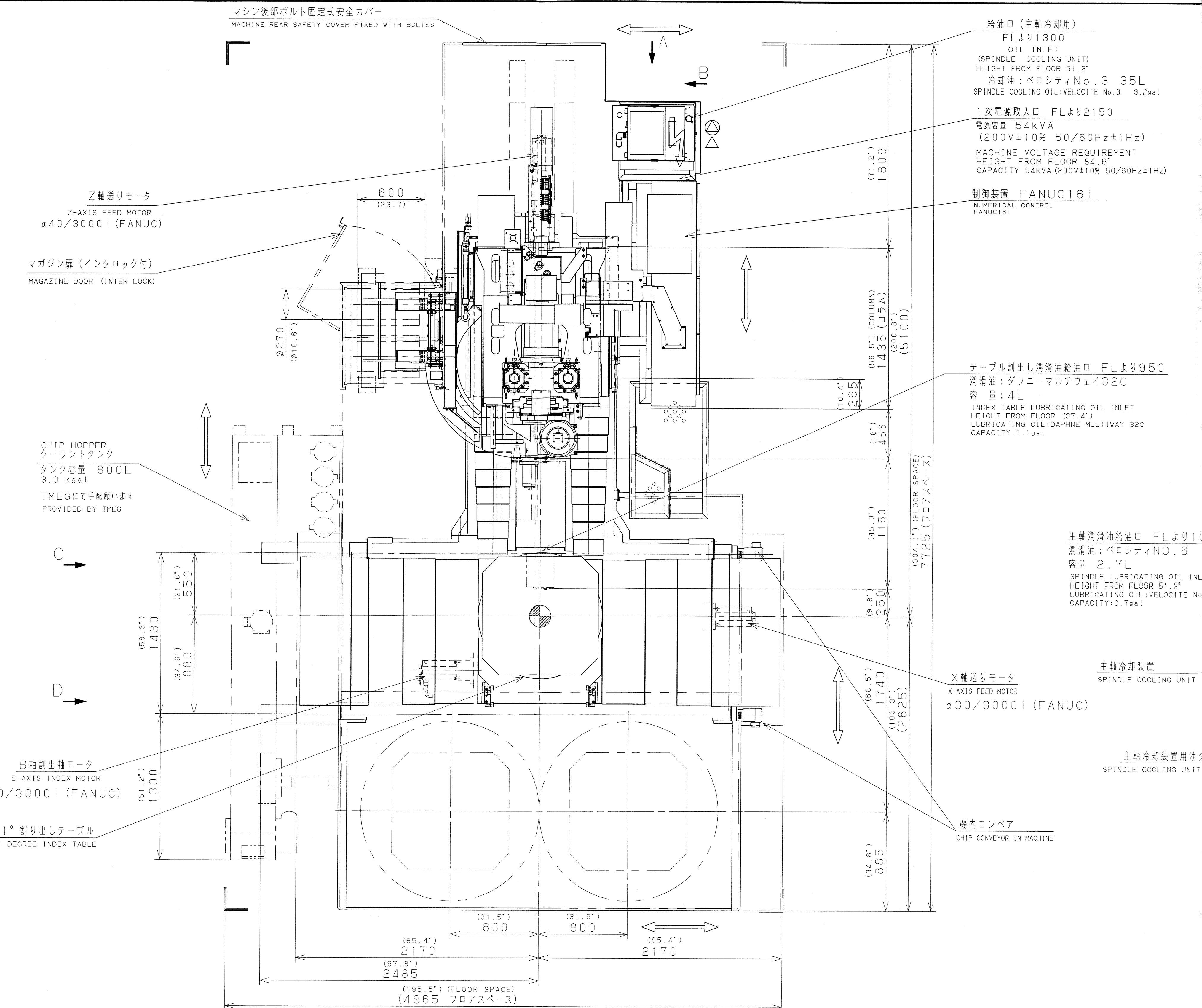
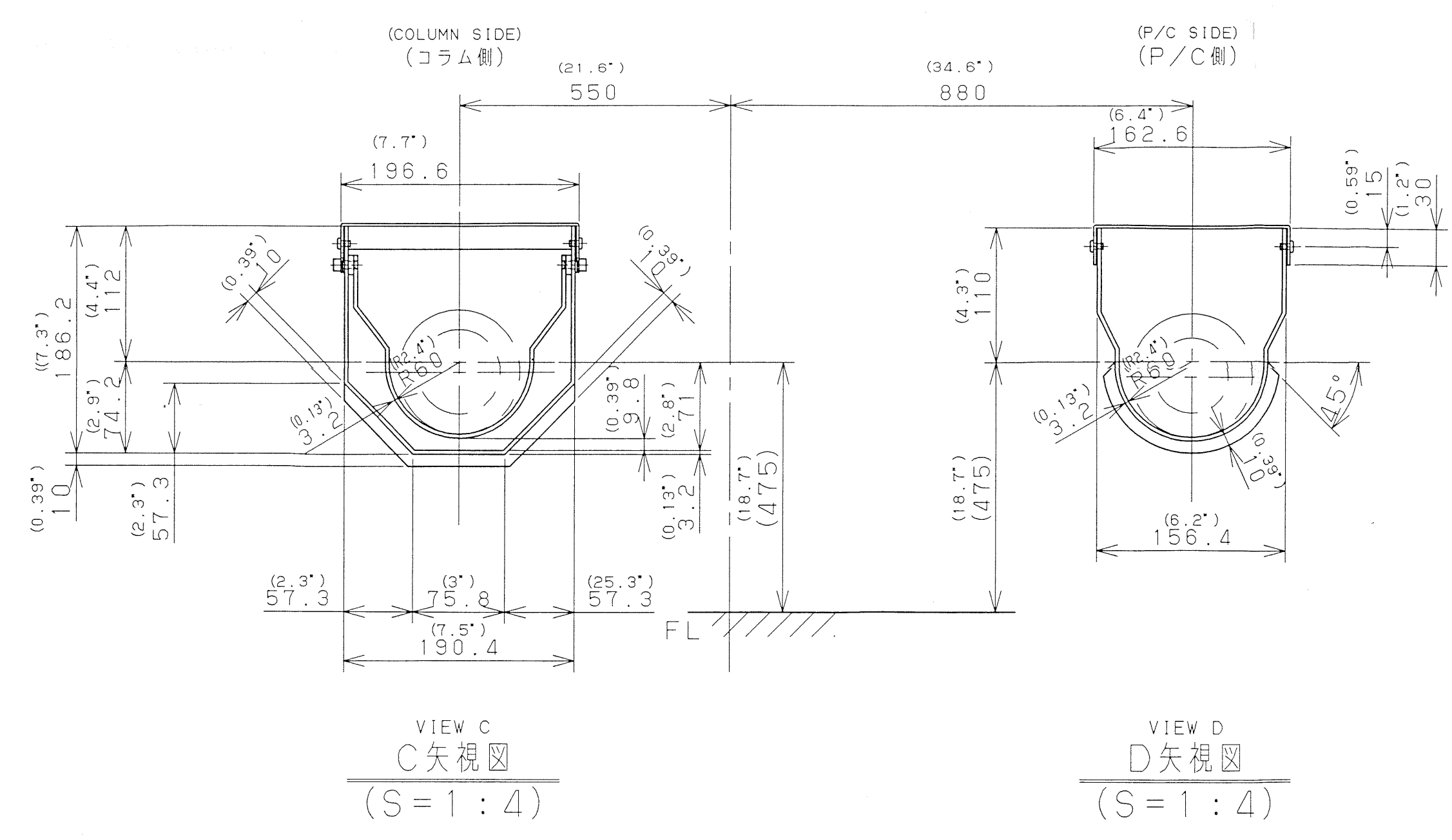
Section (X-X) and (Y-Y) Through Concrete Slab

Foundation Compressive Strength  
 Must Be Greater Than 83 kN/m<sup>2</sup>

Verwendungsbereich	Izul. Abw.	Oberfl.	Maßstab MAßSTAB	IGewicht
			Werkstoff, Halbzeug Rohteil-Nr Modell- oder Gesenk-Nr	
	Datum	Name	BENENNUNG	
	Bearb. BEARBEIT	NAME		
	Gepr. GEPRÜFT	NAME		
	Norm			
			ZEICHNUNGSNUMMER	Blatt
Zust.	Änderung	Datum	Name	Ursprung
			Ersatz für:	Ersatz durch:

注記  
 1. フロアスペース4965X7725は作業及び保守管理に必要なスペースは含まれていません。  
 2. 作業台は必要に応じて弊社にて御手配願います。  
 3. 図中\*印部は廃油タンク、フィルター付レギュレータ等  
 日常保守、点検作業が必要です。

REMARKS  
 1. MACHINE SPACE (195.5" X 304.1") DOES NOT INCLUDE MAINTENANCE SPACE. PLEASE PLACE SUITABLE SPACE FOR MAINTENANCE AROUND MACHINE.  
 2. WORKING STEP AND PLATFORMS, IF NECESSARY, ARE TO BE PREPARED BY CUSTOMER.  
 3. MAINTENANCE AND INSPECTION OF PARTS \* DRAIN TANK AND FILTER REGULATORS etc. SHALL BE PERFORMED EVERY DAY.



→	通過	PASSAGE
○	給油口	OIL INLET
△	オイルレベルゲージ	OIL SIGHTGAUGE
⇄	電源入口	POWER SOURCE
⇄	エア入口	AIR SOURCE
○	作業台	OPERATOR
○	清掃位置	CLEANING POS.
○	水準位置	LEVEL POS.
○	配管バルブスペース	PIPING SPACE
○	操作盤	OPERATION PANEL
○	切削排出方向	CHIP FLOW
○	モックアップ位置	SETTING POS.
○	ワーク流れ方向	COMPONENT FLOW
○	カバー外枠	GUARD OUTLINE
○	設置基準点	BASE POINT
○	設置基準寸法	BASE DIMENSION

