



# Asset-Trade

Assessment & Sale of Used Assets

Ref. No.: 1451

## Overview and Technical Data:

**HOMAG BRANDT KDF 650 edge banding machine**

**HOMAG**

**HC | HOMAG**

Year of Build: Jan 2012



## Description:

### Used HOMAG BRANDT Profiline KDF 650 with LigMatech Ecomat ZHR Retrun

Controls Power Control PC 20+

Single-sided edge banding machine for processing straight workpiece edges and for gluing and reworking various edge materials in longitudinal and transverse throughfeed.

#### Technical Data:

- Workpiece thickness: 8 - 60 mm
- Workpiece width
  - min. 70 mm (for workpiece thickness 12-22 mm)
  - min. 120 mm (for workpiece thickness 23–40 mm)
  - min. d150 mm (for workpiece thickness 41–60 mm)
- Workpiece protrusion: 38 mm
- Edge material roll 0.4 - 3 mm
- roll diameter max. 830 mm
- Edge material strips 0.4 - 12 mm
- Working height 950 mm
- Feed rate 8 -18 m/min
- Feed rate max. with profile cutter 11 m/min
- Feed max. with profile cutter in conjunction with VKNR 4839 14 m/min
- Unit equipment
- Joining unit 2 x 2.2kW; 200 Hz
- Gluing unit A12 Workpiece preheating, quickmelt application unit, glue reactivation (infrared emitter), automatic edge magazine with reinforced pre-cutting shears, pressure zone with driven main pressure roller and 3 free-running holding pressure rollers.
- Cross-cut unit bevel/straight 2x 0.35 kW; 12000 rpm
- Pneumatic 2-point adjustment of cross-cuts
- Pre-milling unit 2 x 0.55 kW; 12000 rpm counter rotation
- Multifunction profile trimming unit 2 x 0.4 kW; 200 Hz; 12000 rpm
- Profile scraper With quick-change heads
- Glue joint scraper
- Buffing unit 2x 0.18 kW
- Pneumatic package for caps and scraper
- Power Control PC 20+ electronic control unit
- Pneumatic connection Min. 6 bar



## Technical Data:

### Technical Data:

Control: CNC

### Dimensions and Weight:

Length: 6.250 mm

Weight: 3.000 kg

### Buyer Information:

Condition: Very good condition

Available: Immediately

Sold as:

EXW (Ex Works - Incoterm)

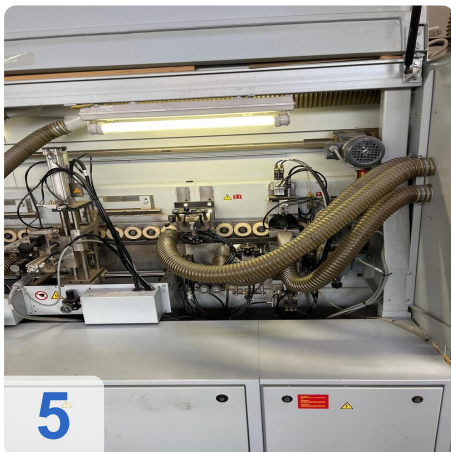
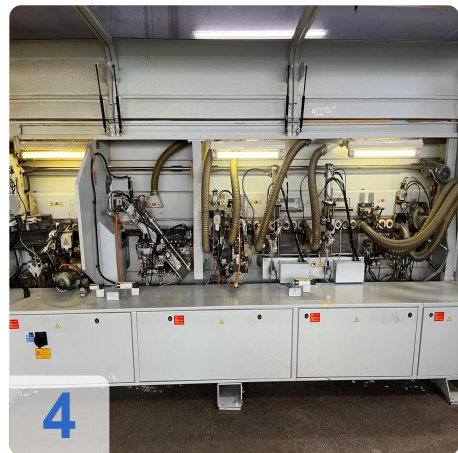
VAT: 19 %

Buyers Premium: 18 %

Location: Germany



## Images:

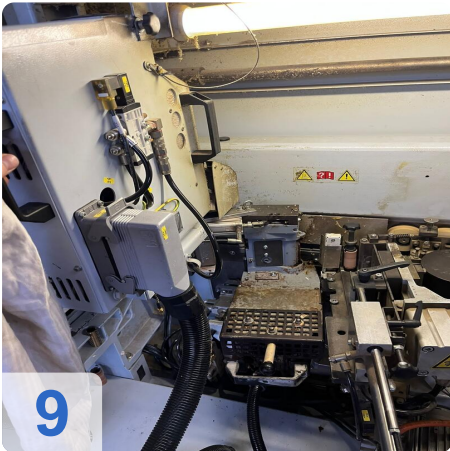
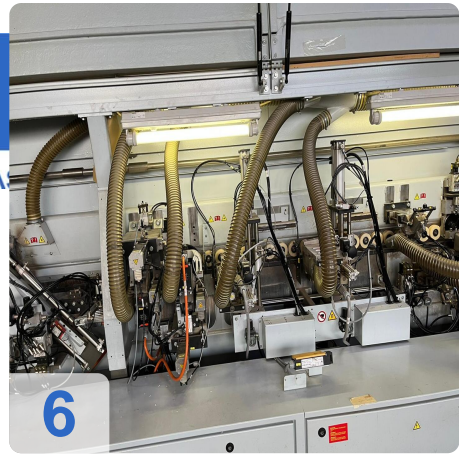




Assets

e

Assets





A

e

Assets



12



13



# Asset-Trade

Assessment & Sale of Used Assets

QR Code for <https://www.asset-trade.de/en/print/pdf/node/7768?la>

**Asset-Trade**

**Assessment and Sale of Used Assets world  
wide**

**Am Sonnenhof 16**

**47800 Krefeld**

**Germany**

**Tel.: +49 2151 32500 33**