



# Asset-Trade

Assessment & Sale of Used Assets

Ref. No.: 1450-11292023

Overview and Technical Data:

**TRAUB TND 200 CNC Lathe for Sale**

TRAUB

**INDEX**

**TRAUB**

Year of Build: Mar 1992



## Description:

### Used TRAUB SONIM TND 200 CNC Lathe for Sale

CNC Controls Traub TX8F

Technical Data:

- Chuck diameter: 140 mm
- Feed speed X / Z: X:155 Z:250 mm / min
- Turning Length: 250 mm
- Spindle passage: 42 mm
- Spindle Speeds: 5000 RPM
- Feed Capacity - Z: 2,9 kN
- Feed Capacity - X: 2,9 kN
- Rapid Travel Speed X-Axis: 15 m / min
- Rapid Travel Speed Z-Axis: 25 m / min
- Main Drive: 7,5 kW
- Tool changer: 1/12 Pcs
- Turning diameter over cross slide: 220 mm



## Technical Data:

### Technical Data:

Control: TX8F  
Machine Hours: 26166.00 hrs.  
Turning length: 250.00 mm  
Turning diameter: 200.00 mm  
Spindle Speed: 5000.00 rpm  
Tool Capacity: 12 x  
Tailstock: Yes  
Bezel: Yes

### Dimensions and Weight:

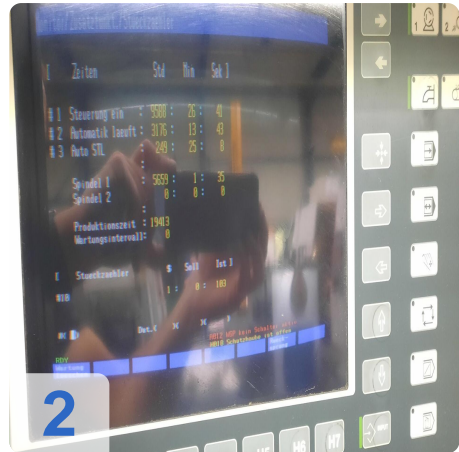
Height: 1700 mm  
Length: 2300 mm  
Width: 1500 mm  
Weight: 2900 kg

### Buyer Information:

Condition: Very good condition  
Available: Sold  
Sold as:  
EXW (Ex Works - Incoterm)  
VAT: 19 %  
Buyers Premium: 18 %  
Location: Germany



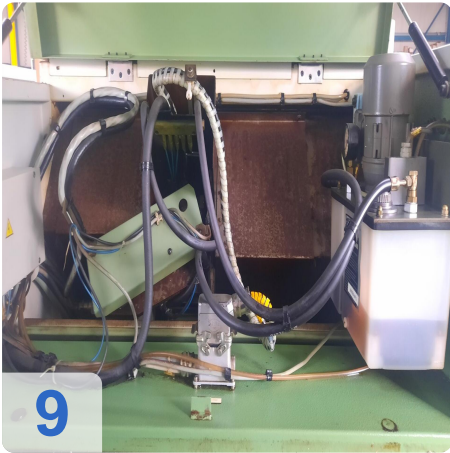
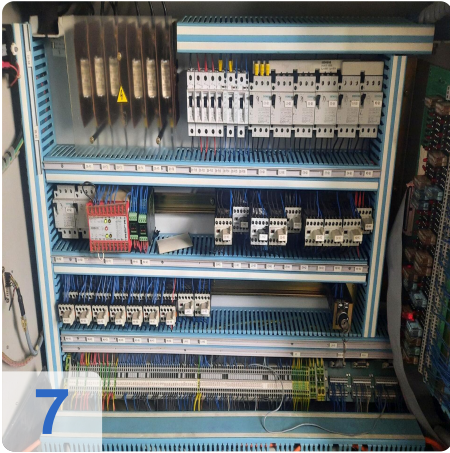
## Images:





As

e  
Assets





# Asset-Trade

Assessment & Sale of Used Assets



# Asset-Trade

Assessment & Sale of Used Assets

QR Code for <https://www.asset-trade.de/en/print/pdf/node/7767?la>

**Asset-Trade**

**Assessment and Sale of Used Assets world  
wide**

**Am Sonnenhof 16**

**47800 Krefeld**

**Germany**

**Tel.: +49 2151 32500 33**