



# Asset-Trade

Assessment & Sale of Used Assets

Ref. No.: 1411-03201235

## Overview and Technical Data:

**SWA/Kiefel Madillon punching Press 500kn  
Hydraulic**

**KIEFEL**

**KIEFEL  
TECHNOLOGIES**



Year of Build: Jan 2012



## Description:

### Used SWA/KIEFEL punch press 500kN - Madillon punching

- CNC control Siemens
- Tool type: Pressure generator with punching tool

#### Technical data:

- Table surface (WxD): 2500 x 1200 mm
- Clamping force: 500 kN
- Opening width: 1000 mm
- Opening force: 200 kN
- Follow-up time: 273 ms
- Safety distance: 780 (to be 500) mm
- Operating pressure hydraulics: max. 220 bar
- Operating pressure pneumatics: min. 6 bar
- Hydr. tank capacity: 630 l
- Connected load: 115 kW
- Operating voltage and frequency: 400 V/ 50 Hz
- Weight: 19.000 kg

Still under Power. Further data on request

---

SWA has hydraulic presses with a clamping force of up to 500 tonnes. We use our presses to adjust moulds and to produce tryouts and prototypes.

Punching tools cut outer, inner contours and holes on previously pressed, injection moulded or foamed components. We specialise in stamping the highest quality three-dimensional products such as complete instrument panels, door panels and headliners as well as acoustic and insulation parts.

SWA develops and manufactures tools, machines and systems for the production of vehicle interior, exterior and acoustic insulation parts, especially for customers in the automotive industry and its suppliers.

SWA produces tools, machines and systems for the production of interior, exterior and acoustic insulation parts for vehicles. These products from SWA are available for use at all major automotive production sites and are therefore the ideal complement to the Kiefel



**Asset-Trade**

Assessment & Sale of Used Assets

technology portfolio.



## Technical Data:

### Technical Data:

Control: SIEMENS

### Dimensions and Weight:

Height: 4.400 mm

Length: 4.500 mm

Width: 3.800 mm

Weight: 19.000 kg

### Buyer Information:

Condition: Very good condition

Available: Immediately

Sold as:

EXW (Ex Works - Incoterm)

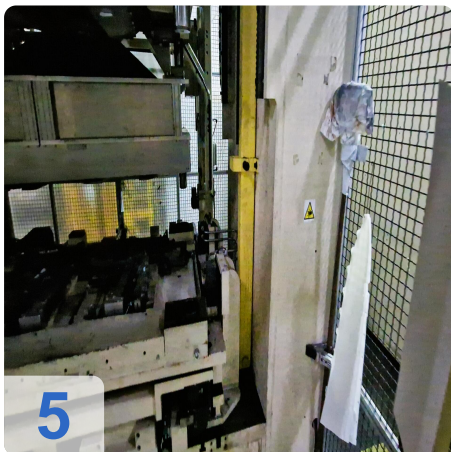
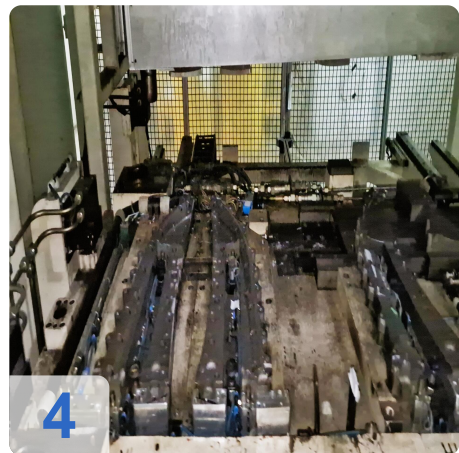
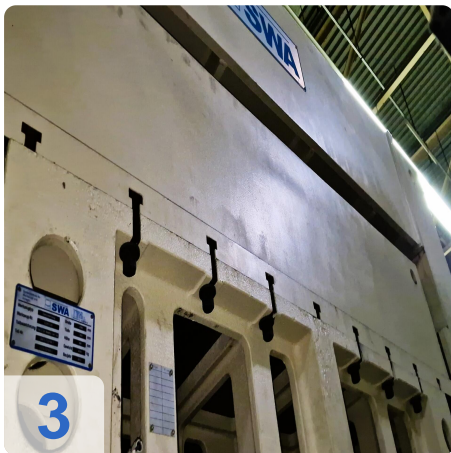
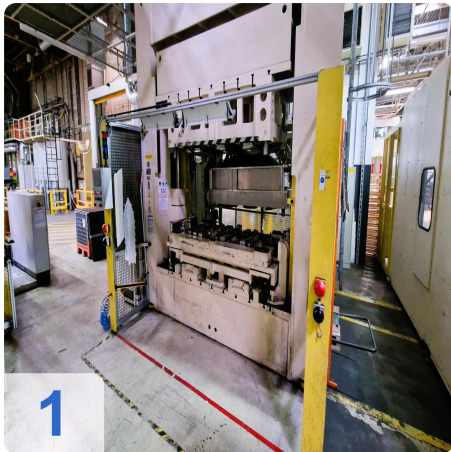
VAT: 19 %

Buyers Premium: 18 %

Location: Germany



## Images:





AS

e

Assets



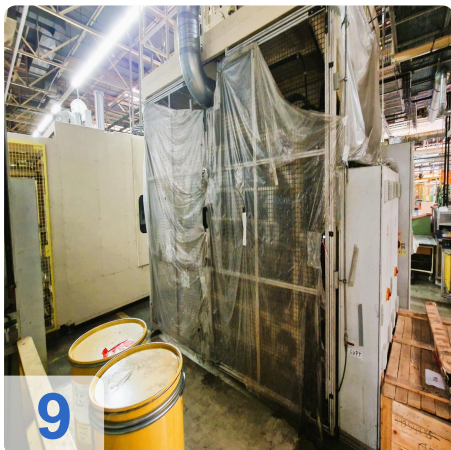
6



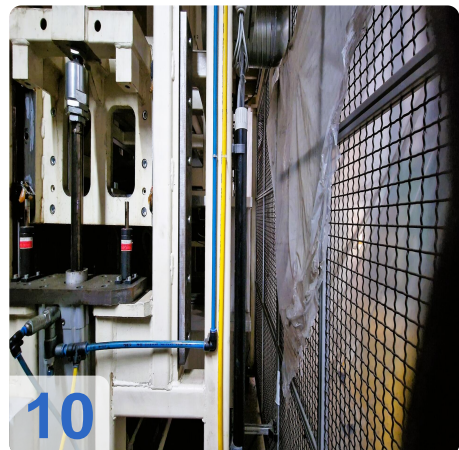
7



8



9



10



Video:





# Asset-Trade

Assessment & Sale of Used Assets



**Asset-Trade**

**Assessment and Sale of Used Assets world  
wide**

**Am Sonnenhof 16**

**47800 Krefeld**

**Germany**

**Tel.: +49 2151 32500 33**