



Asset-Trade

Assessment & Sale of Used Assets

Ref. No.: 1335-08311200

Overview and Technical Data:

**ARISA S-4-630-420-200-FDE DOUBLE
MECHANICAL PRESS**

ARISA

Nidec
PRESS & AUTOMATION

ARISA

Year of Build: Jan 1998



Description:

Used ARISA S-4-630-420-200-FDE TRANSFER PRESS for Sale

SIEMENS S7 -300 control, moving bolster, Frame with Die rods, 4 rods, KEMMERICH feeding line with Electronic feeder, material width max. 1500mm, material thickness max. 4mm, straightener 9 straightening rolls and 2 feeding rolls, requested power 11kW, decoiler max. 10 tons capacity, loading chair Electronic transfer: Distance between bars Closed 600 mm, distance between bars open 1900mm, distance between tools 700mm

Technical Data for Arisa Press:

- Press Force: 630 tons (6300kN)
- Dimensions
 - Table height over floor height mm
 - Distance between uprights: 4.470 mm
 - Mould installation height mm: 1.000 mm
 - Windows: 2.500 mm
- Table & Ram
 - Table size: 4.200x2.000 mm
 - Top tool Max. Weight: 20,000kg
 - Ram size: 4.200x2.000 mm
 - Ram adjustment: 200 mm
- Stroke
 - Stroke length: 400 mm
 - Strokes Rate Min/Max.: 10 -40 minute
- Power
 - Requested power: 165,5 kW
 - Set power : 260 kW
 - Electrical circuit : 400 - 50V - Hz
 - Hydraulic pressure: 300 bar
- Other
 - Safety distance time : 0.21s
 - Max. Flywheel speed : 525 rpm
 - Clutch-brake combination : 20 Clutches/min
 - Clutch-brake combination Min. - Max. Pressure : 55 - 65bar
- Dimentions:



- Height over floor: 7.950 mm
- Width: 6.100 mm
- Depth: 3.900 mm
- Weight: 218.000 kg

Technical data KEMMERICH RMBM 50.1500 UG -S Straightener with decoiler type V 1000 A - SH- 1500 - S

- Strip width: 200-1500 mm
- Strip thickness: 0.5-4.0 mm (at material strength of 400 N/mm²)
- Max. correctable cross-section: 2400 mm²
- Number of straightening rolls: 9 pieces (with support rolls)
- Straightening roller Ø: 50 mm
- Number of pull rolls: 2 pieces
- Pull roller Ø: 100 mm
- Maximum strip speed: 32 m/min.
- Connection voltage: 230/400 V - 50 Hz



Technical Data:

Technical Data:

Control: SIMATIC S7

Buyer Information:

Condition: Repairs required

Available: Special Offer

Sold as:

EXW (Ex Works - Incoterm)

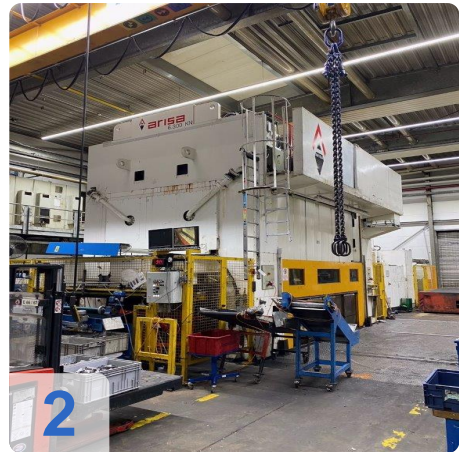
VAT: 19 %

Buyers Premium: 18 %

Location: Germany



Images:

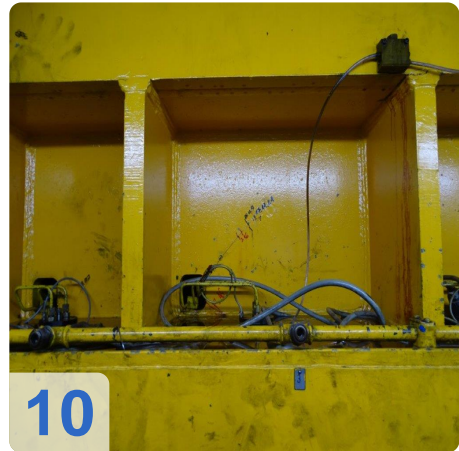
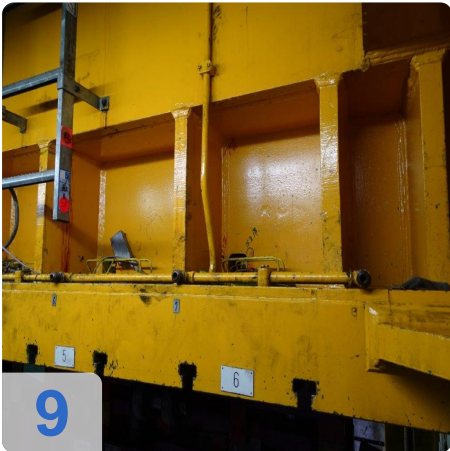
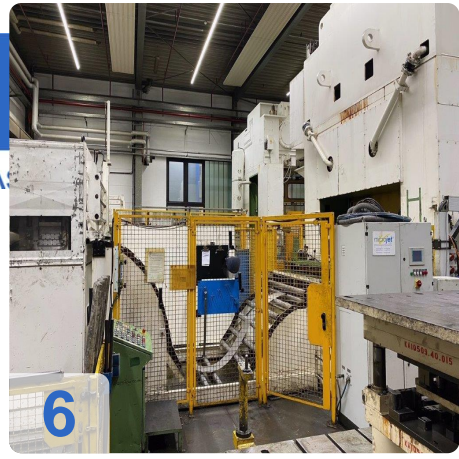




A

e

Assets





As

e

Assets

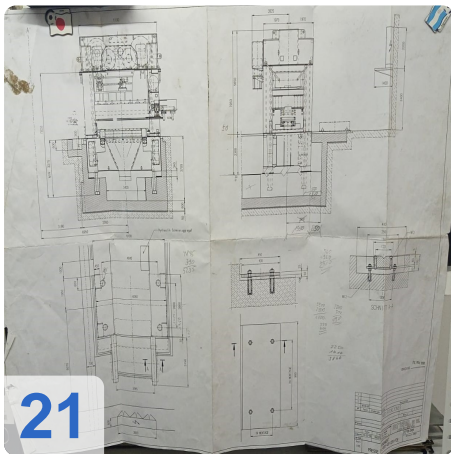
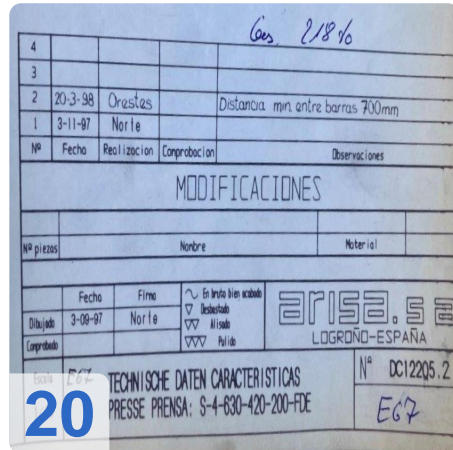
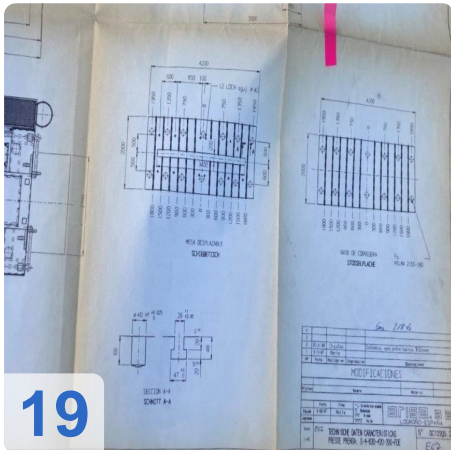
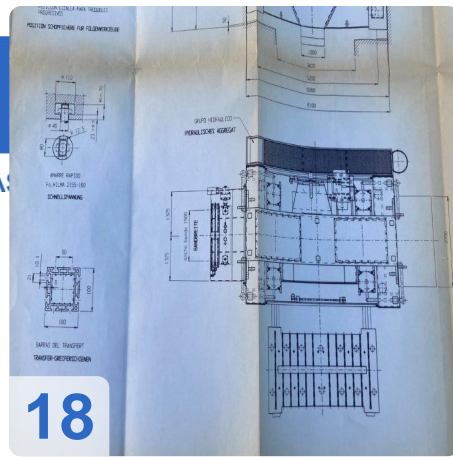




As

e

ssets

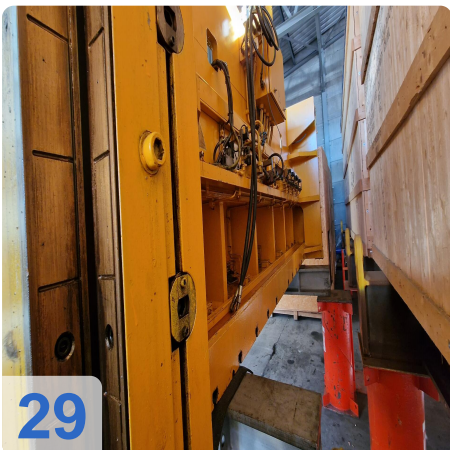




As

e

Assets

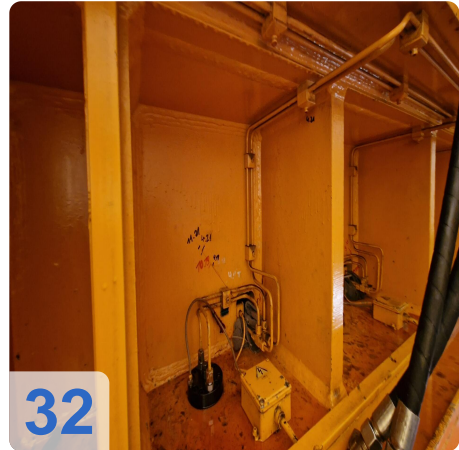




A

e

Assets





Video:





Asset-Trade

Assessment & Sale of Used Assets



Asset-Trade

**Assessment and Sale of Used Assets world
wide**

Am Sonnenhof 16

47800 Krefeld

Germany

Tel.: +49 2151 32500 33