



Asset-Trade

Assessment & Sale of Used Assets

Ref. No.: 1328-07131200

Overview and Technical Data:

INDEX GU600 with bar loader

INDEX

INDEX

Year of Build: Jan 1986



Description:

Used INDEX GU 600 CNC Lathe with Bar loader

Two Units available Build 1986 & 1985

CNC Controls Siemens Sinumerik 3 T

One shift operation only

Machines are still running on a daily basis, and are in very good condition for their age.

Technical Data:

- Working space
 - Swing over bed max. 350 mm
 - Swing over bed slide max. 230 mm
 - Turning diameter max. 210 mm
 - Turning length max. 600 mm
- Main spindle
 - Spindle speed max. 5.000 r/min
 - Spindle bore max. 65 mm
 - Speed range (1) 25- 2.500 r/min
 - Torque (1) max. 315 Nm
 - Speed range (2) 50- 5.000 r/min
 - Torque (2) max. 155 Nm
 - Driving power max 43 kW
- Turret I (X/Z)
 - Crown- turret with 12x stations inclusive 6x driven tools
 - Stroke in x-axis 181,5 mm
 - Stroke in z-axis 650 mm
 - Tool holder straight shank VDI 30
 - Tool change: 0.6 sec.



Technical Data:

Technical Data:

Control: SINUMERIK 3
Turning length: 650.00 mm
Turning diameter: 250.00 mm
Spindle Speed: 5000.00 rpm
Tool Holder: VDI 30
Driven Tools: 6.00
Tool Capacity: 12 x
Tailstock: Yes
Bezel: Yes

Dimensions and Weight:

Height: 2400 mm
Length: 3400 mm
Width: 2000 mm
Weight: 4500 kg

Buyer Information:

Condition: Very good condition
Available: Sold
Sold as:
EXW (Ex Works - Incoterm)
VAT: 19 %
Buyers Premium: 18 %
Location: Germany



Images:





As

e

Assets





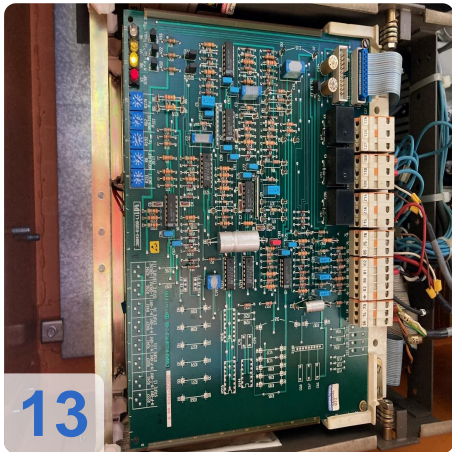
As

e

assets



12



13



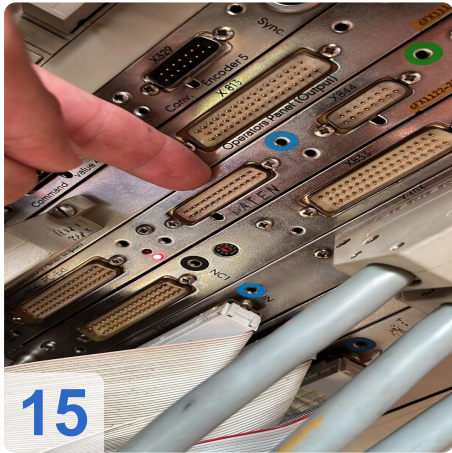
14

outos dispositivos de aperto.

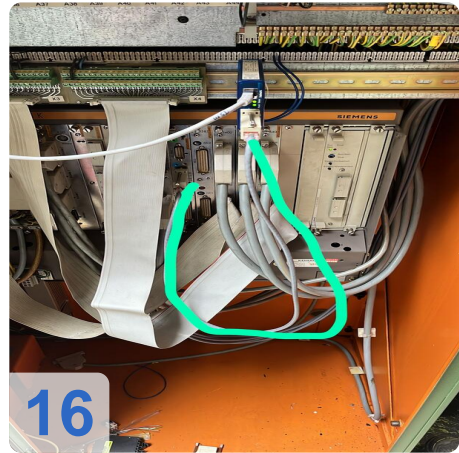
G 22134, 10

INDEX	INDEX-WERKE KG
	HAHN & TESSKY ESSELINGEN
Stromart/Frequenz	3~ 50 Hz
Nennspannung	300 V
Steuerspannung	220 V 50 Hz
Nennstrom	100 A
Maschinen-Nr.	10000001141

Nur bei Spindelstillstand schalten
Switch off only when spindle stopped
Déconnecter seulement quand la broche est arrêtée



15



16



Video:







Asset-Trade

Assessment & Sale of Used Assets

QR Code for <https://www.asset-trade.de/en/print/pdf/node/7276?la>

Asset-Trade

**Assessment and Sale of Used Assets world
wide**

Am Sonnenhof 16

47800 Krefeld

Germany

Tel.: +49 2151 32500 33