



Asset-Trade

Assessment & Sale of Used Assets

Ref. No.: 1318-05111914

Overview and Technical Data:

MORI SEIKI MV 65 vertical machining center

DMG MORI SEIKI

DMG **MORI SEIKI**

Year of Build: Jan 1991



Description:

Used MORI SEIKI MV 65 vertical machining center with 3 axis

CNC Control MORIC-M5F (Fanuc) with new Monitor

Technical Data

- X - Travel 1524 mm
- Y - Travel 650 mm
- Z - Travel 650 mm
- Table Length x Width 1700 x 660 mm
- Table load 2000 Kg
- Spindle Taper BT50
- power on spindle 35 Hp kW
- Spindle speeds / ranges 6000 Rpm
- ATC tool changer 30 Pos x Ø 240 x 20 Kg
- Coolant true spindle / Bar Yes Bar



Technical Data:

Technical Data:

Control: FANUC
Machine Hours: 5.853 hrs.
Spindle Speed: 6.000 rpm
Tool Holder: SK50
Tool Capacity: 60 x

Travels:

X-Axis: 1.524 mm
Y-Axis: 650mm
Z-Axis: 650 mm

Dimensions and Weight:

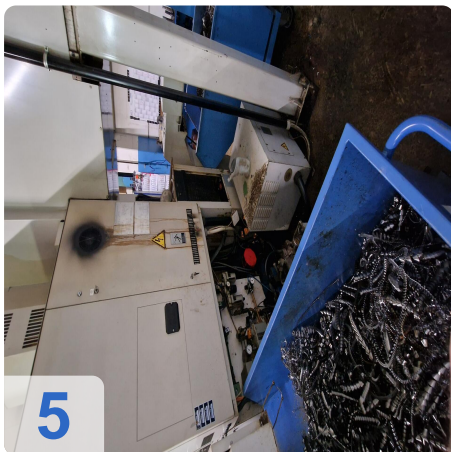
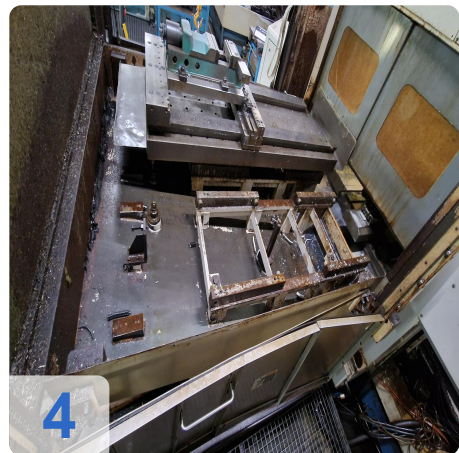
Height: 2.950 mm
Width: 2.260 mm
Length: 3.280 mm
Weight: 13.300 kg

Buyer Information:

Condition: Normal wear
Availability: Immediately
Sold as:
EXW (Ex Works - Incoterm)
VAT: 19 %
Buyers Premium: 16 %
Location: Germany



Images:





As

e

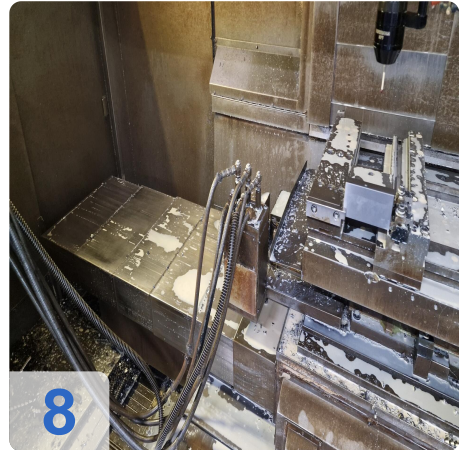
Assets



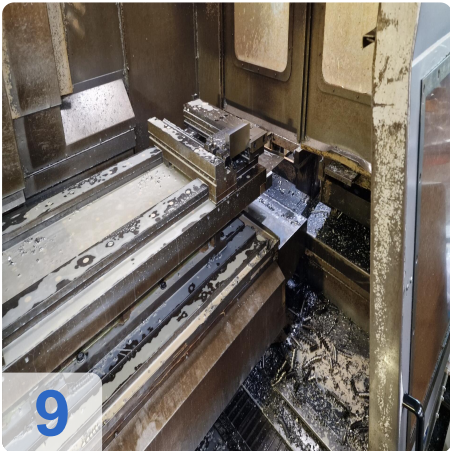
6



7



8



9



10



11



As

e

ssets





Asset-Trade

Assessment & Sale of Used Assets

QR Code for <https://www.asset-trade.de/en/print/pdf/node/7247?la>

Asset-Trade

**Assessment and Sale of Used Assets world
wide**

Am Sonnenhof 16

47800 Krefeld

Germany

Tel.: +49 2151 32500 33