



# Asset-Trade

Assessment & Sale of Used Assets

Ref. No.: 1318-05111914

## Overview and Technical Data:

**MORI SEIKI MV 65 vertical machining center**

**DMG MORI SEIKI**

**DMG MORI SEIKI**

Year of Build: Jan 1991



## Description:

### **Used MORI SEIKI MV 65 vertical machining center with 3 axis**

CNC Control MORIC-M5F (Fanuc) with new Monitor

#### Technical Data

- X - Travel 1524 mm
- Y - Travel 650 mm
- Z - Travel 650 mm
- Table Length x Width 1700 x 660 mm
- Table load 2000 Kg
- Spindle Taper BT50
- power on spindle 35 Hp kW
- Spindle speeds / ranges 6000 Rpm
- ATC tool changer 30 Pos x Ø 240 x 20 Kg
- Coolant true spindle / Bar Yes Bar



## Technical Data:

### Technical Data:

Control: FANUC  
Machine Hours: 5.853 hrs.  
Spindle Speed: 6.000 rpm  
Tool Holder: SK50  
Tool Capacity: 60 x

### Travels:

X-Axis: 1.524 mm  
Y-Axis: 650mm  
Z-Axis: 650 mm

### Dimensions and Weight:

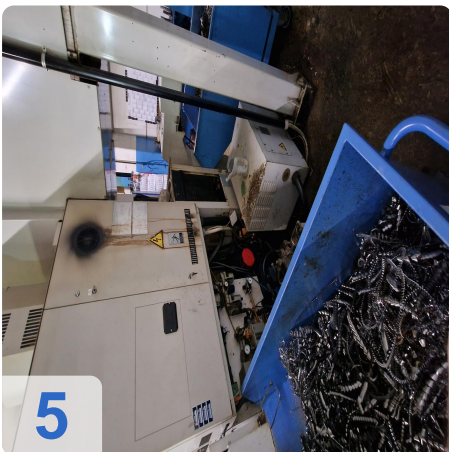
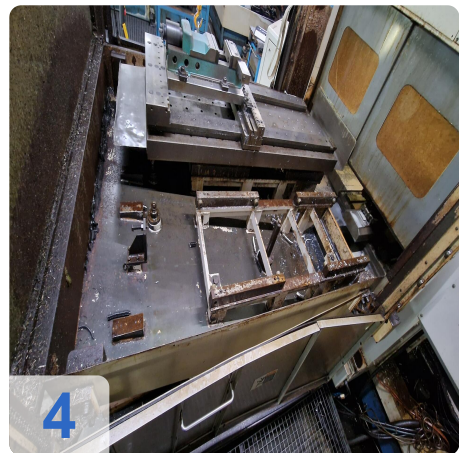
Height: 2.950 mm  
Width: 2.260 mm  
Length: 3.280 mm  
Weight: 13.300 kg

### Buyer Information:

Condition: Normal wear  
Availability: Immediately  
Sold as:  
EXW (Ex Works - Incoterm)  
VAT: 19 %  
Buyers Premium: 16 %  
Location: Germany



## Images:

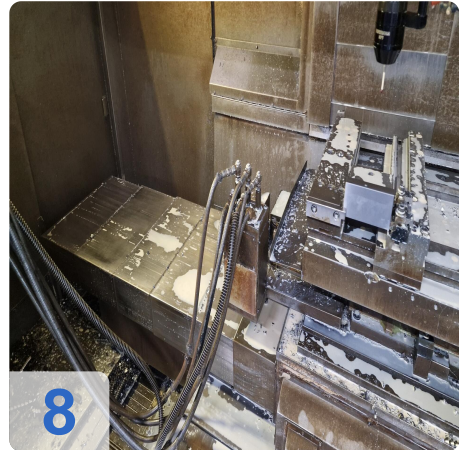




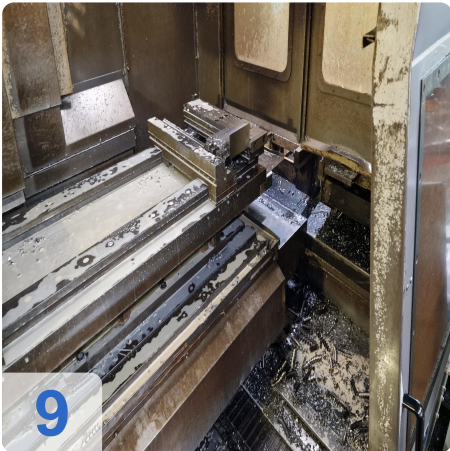
6



7



8



9



10



11



As

e

Assets



12



13



14



# Asset-Trade

Assessment & Sale of Used Assets



**Asset-Trade**

**Assessment and Sale of Used Assets world  
wide**

**Am Sonnenhof 16**

**47800 Krefeld**

**Germany**

**Tel.: +49 2151 32500 33**