



# Asset-Trade

Assessment & Sale of Used Assets

Ref. No.: 1317-0501221255

## Overview and Technical Data:

**BRUDERER BSTA 50EL High Speed Press with  
BBV 205/120**

**BRUDERER**

Year of Build: Jan 1991



## Description:

# Used BRUDERER BSTA 50EL + BBV 205/120 High Speed Mechanical Press with LEICHT PTW-130 + BA-120 Reel & Tape Puller

## Technical Data Bruder Punching press

Year of construction 1991

Cnc Controls Siedfried Software 12.4

- Pressure force: 500 kN (50Tons) nominal capacity
- Stroke rates: 16; 19; 25; 32; 38; 44; 51 mm
- manually adjustable
- Speed range 100 to 750 SPM max.
- Table: 650 x 920mm
- 950mm clear width
- Ram height adjustment: 60 mm
- Max. Tool width clearance between columns: 770 mm
- Max. Strip clearance width: 203 mm
- Bed opening: 730 x 250 mm.
- Front and rear safety guards with inspection glass
- Feed unit Bruderer BBV 205/120 Double Precision Roll Feed
  - Feed angle 90°
  - Feed length: 0-120 / 0-150 mm
  - Roller width: 120 /200 mm
  - Strip width: 203 mm
  - Strip thickness: 6 mm



- Weight: ca. 320 kg
- Belt infeed
- height from approx. 80 to approx. 180mm
- Motor power: 28 kW
- Weight of machine: ca. 8000 kg
- Machine dimensions: H 3040 x W 2710 x D 1820 mm

## Installation dimensions and throat hole:

- Installation space: LxW 920 x 650 mm
- Folding hole: LxW 900 x 150mm

The dropout hole consists of a hopper for the waste and an integrated flexible tube for good part removal to another belt. The tube can be adjusted from approx. the middle to the end of the dropout hole and has a size of approx. 130 x 130mm.

## Special features:

- Vester or Siegfried press control
- Noise protection cabin
- Oil-air heat exchanger on LSK
- Hydraulic quick mold clamping
- Mold monitoring in press control
- Electronic cams
- Control cabinet on pedestal

## Engine backlash measurement to evaluate the condition of the mechanical system

- Total clearance (with suspension component): 0.34 mm
- Total clearance (without spring component): 0.268 mm
- According to the statement, the engine is in good condition for its age.

## Technical Data - LEICHT PTW-130 The advantages of the BRUDERER BSTA 50 a gl reel + tape puller BA-120

Every BSTA stamping press contains decades of experience responding to the demands of ambitious customers.

Important innovations and solutions which pay attention to the help you produce more efficiently using our machines

- Control via dancer and loop measurement
- Direction of rotation: left and right

Thanks to the unique lever system of the BSTA stamping press is distributed across the system. This load distribution, together with the clearance and the efficient lubrication system, is a crucial factor for the consistent precision of the machine.

### LEICHT PTW-130

- Belt speed: 25 m/min
- Adjustable stroke with mass balancing system together for a multitude of applications and a wide variety of stroke
- Tape width 100mm
- Tape thickness: 0.1 - 1.0mm
- The neutral ram-guiding system with tilting point contact tool life and for optimum part quality
- Weight PTW: ca. 950 kg
- Ram adjustment during operation under production conditions

### LEICHT BA-120

- Powerful clutch and brake unit for improved first and last reduced waste
- Belt speed: 25 m/min
- Max. Load: 1000 kg
- Micro-tolerances maintained in the bottom dead center stability
- Max. Pallet diameter: 1300mm
- Precision engineering and the unique BRUDERER drive improved reliability and durability across the whole medium
- Integrated measuring and monitoring function improved means of simple control system usability
- Easy attachment of peripheral devices for quicker integration productivity

## Advantages of Bruderer BBV BBV 205/120 Feeder

These entirely mechanical units have been epitomising precision decades. They are driven by the main shaft of the punching press angle-synchronously to the strip feed unit. The feed works with generate the feed movement and with clamping bars that hold the punching process. The feed length can be set steplessly. The accurate and continuous transfer of raw punching materials to the punching tool. The punching press's central lubrication system cooling.



## Technical Data:

### Technical Data:

Control: CNC

### Dimensions and Weight:

Height: 1.820 mm

Length: 3.040 mm

Width: 2.710 mm

Weight: 8.000 kg

### Buyer Information:

Condition: Very good condition

Available: Sold

Sold as:

EXW (Ex Works - Incoterm)

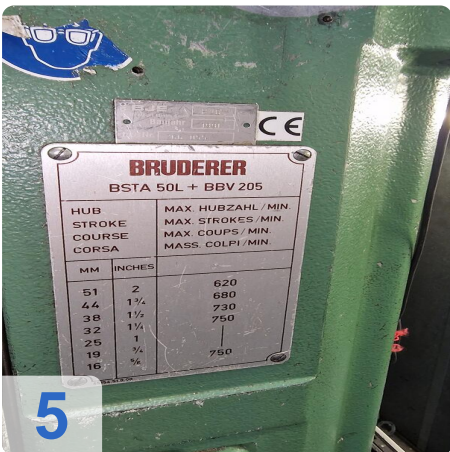
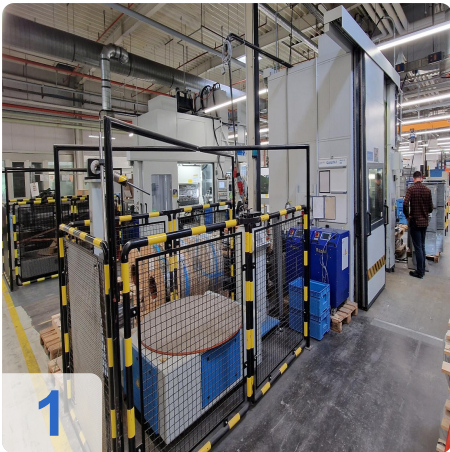
VAT: 19 %

Buyers Premium: 16 %

Location: Germany



## Images:

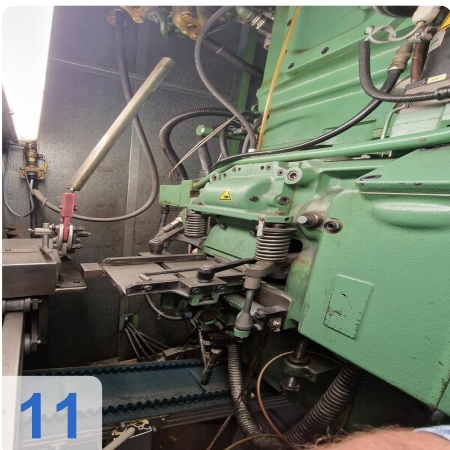
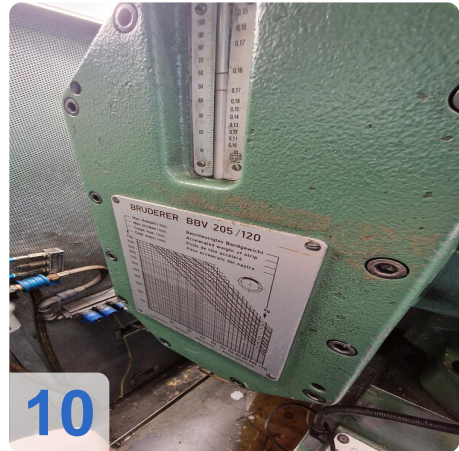
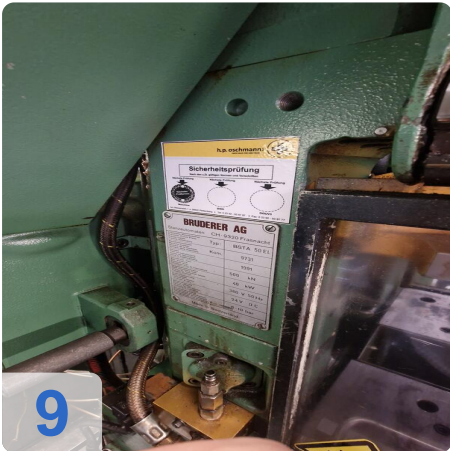
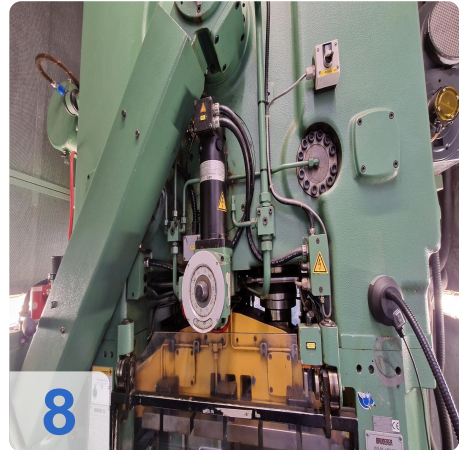




As

e

ssets

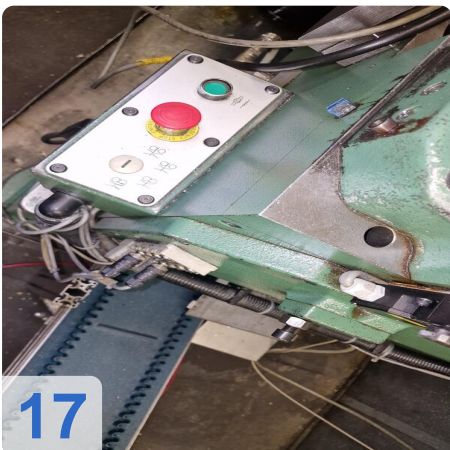
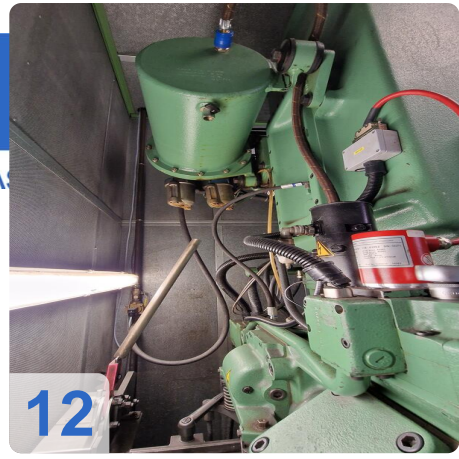




As

e

Assets

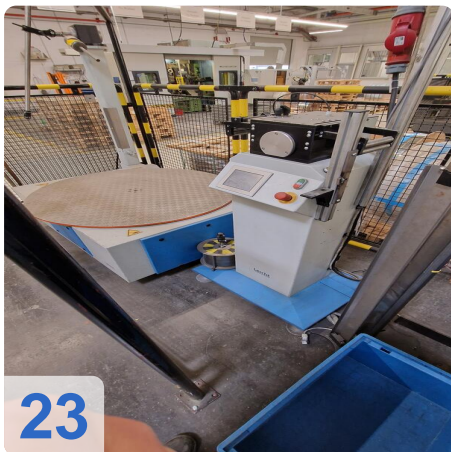
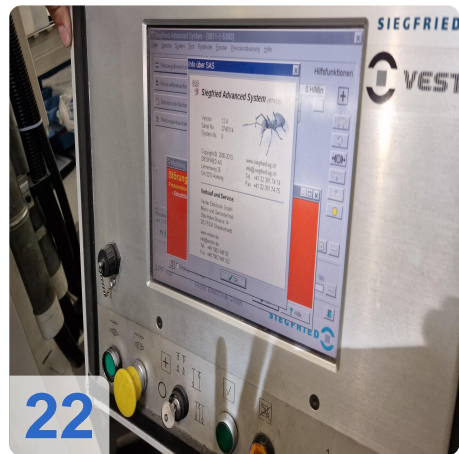




A

e

Assets



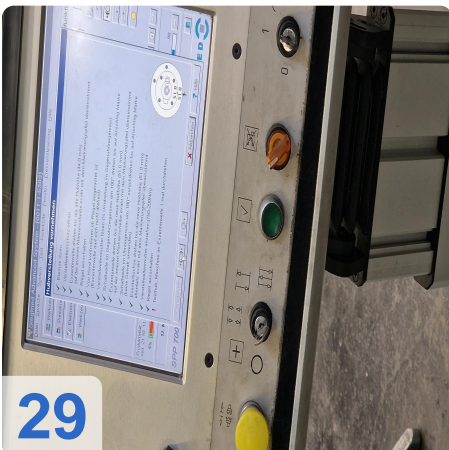
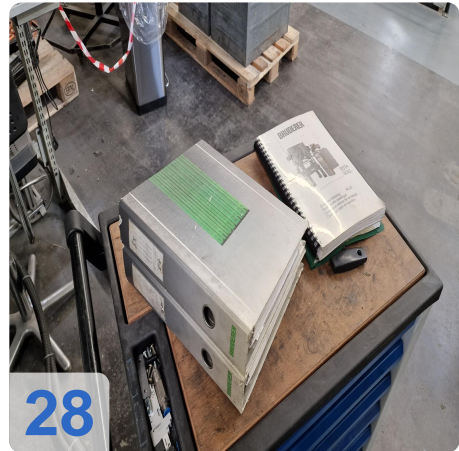
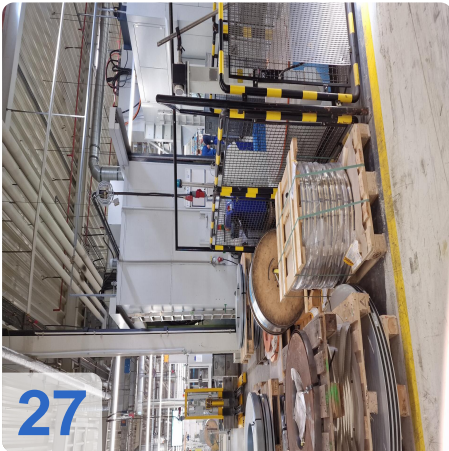
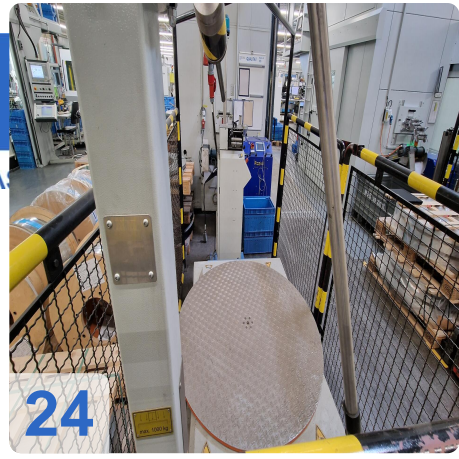




A

e

Assets

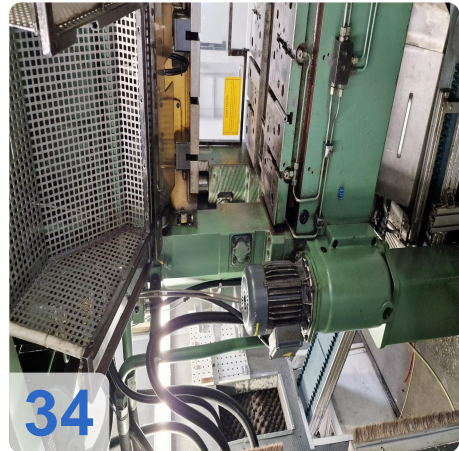
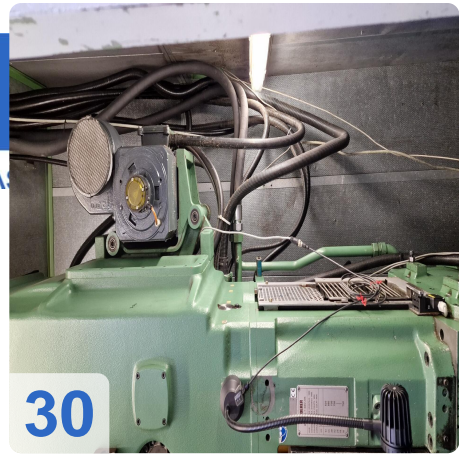




As

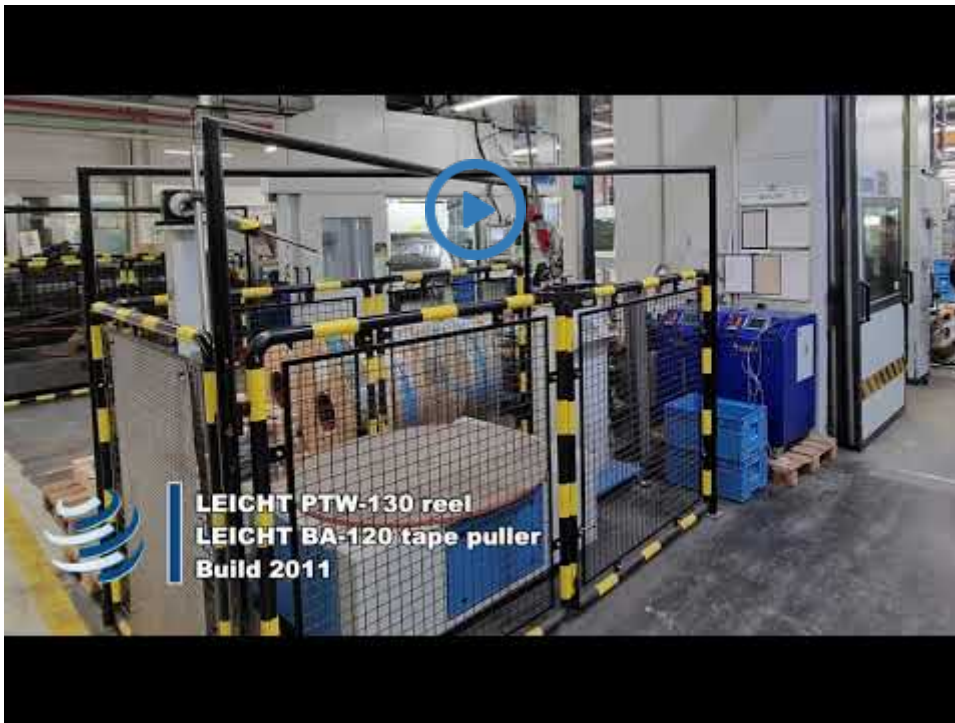
e

Assets





Video:





# Asset-Trade

Assessment & Sale of Used Assets



**Asset-Trade**

**Assessment and Sale of Used Assets world  
wide**

**Am Sonnenhof 16**

**47800 Krefeld**

**Germany**

**Tel.: +49 2151 32500 33**