



# Asset-Trade

Assessment & Sale of Used Assets

Ref. No.: 1301-01311200

Overview and Technical Data:

Buy complete Used Coal Power plant

AEG

# AEG

Year of Build: Jan 1985



## Description:

**This Coal Power plant is no longer Available:**

**We have access to different Coal Power plants from 30 MW to 60 MW around the world.**

---

## **Buy Complete Coal Power Station with 5 MW Steam-Turbine and Electric Power Generator**

**High-pressure radiation boiler with traveling grate firing system Water tube boiler with natural circulation**

The total hours of operation: 282.720 hours

The last major overhaul date (Turbine): Summer 2019

The last generator rewind date: Rotor: Summer 2017 rewind, Stator: 2007 small repair winding

Year of construction 1985 / frequently modernized and updated !!

### **Technical data of Boiler :**

- Steam capacity max continuous: 30 tons/hour
- Steam capacity temporary peak: 34 tons/hour
- Permissible operating pressure: 90 bar
- Hot steam temperature: 500 °C
- Permissible heat output: 27.6 MW
- Feed water temperature: 105-130 °C
- Operating days / year: approx. 300 days
- Fuel: hard coal



- Days of Operation per year: 300 days

## Coal/Fuel Data:

- Storage capacity: 2.000 tons
- Daily consumption: 80-100 tons
- Trough chain conveyor: 40/80 tons/hour

## Flue gas cleaning unit:

- 2 zones electric separator
- Flue gas discharge via induced draft speed controlled
- Frequently modernized and updated
- Chimney mouth: 70,5m

## Feed water supply:

- full desalination: 2x 15m<sup>3</sup>/h
- mixed bed filter: 2x 30 m<sup>3</sup>/h
- Condensate cooling by air preheating
- Feed water tank useful capacity: 30 m<sup>3</sup>
- Full load pump
  - 1x width E-drive speed controlled
  - 1x with turbo drive speed controlled, with quick start device

## AEG - KANIS - back pressure turbo type G16

Year of construction 1984 / frequently modernized and updated

to drive a three-phase synchronous generator

## Technical data AEG LDW (SIEMENS):

- Pumping capacity: 34 t/h
- Overpressure at inlet: 76 bar
- Overpressure at outlet: 2,5-7.5 bar
- Rotational speed: 12.000/1500 min<sup>-1</sup>
- Voltage: 10.5 KV
- Terminal power max: 5.200 KW

## Technical data AEG steam turbine:



- Turbine power: 5.275 kW
- Turbine speed: 12.107 min -1
- Turbine high speed: 13318 min -1
- Turbine steam pressure: 78 bar
- Suction steam temperature: 490 -500 °C
- Turbine exhaust steam pressure 3.5 - 8.5 bar
- Direction of rotation left, seen in direction of turbine-gear-generator

**The Power Station is still in use and can be inspected by appointment in the South of Germany. It will become available for dismantling in 2024.**

---

## Advantages of Steam Power Plants :

- Fuel used is cheaper.
- They can respond quickly with changes in load on the plant.
- Space required is less compared to hydro power plants.
- A portion of steam can be used as process steam for various industries.
- They can be overloaded up to 20% without difficulty. Cost of electric power generation and its initial cost is less compared to diesel plants.
- Can be located near the load centre conveniently thus reduces the transmission line cost and loss of energy in transmission lines.



## Technical Data:

### Technical Data:

Control: CNC

### Buyer Information:

Condition: Very good condition

Available: On Request

Sold as:

EXW (Ex Works - Incoterm)

VAT: 19 %

Buyers Premium: 8 %

Location: Germany



## Images:

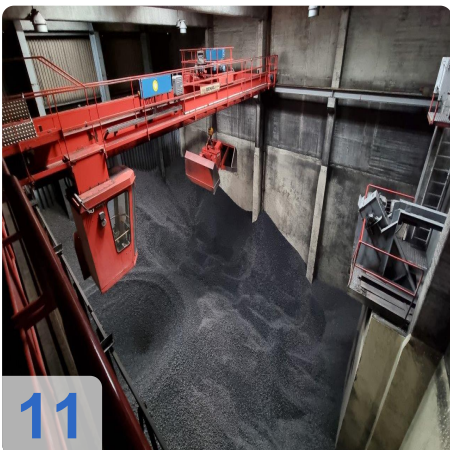
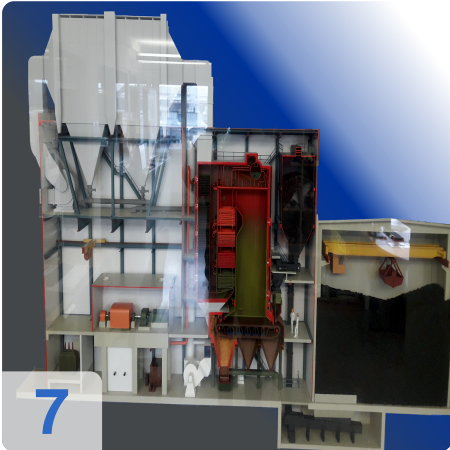




As

e

assets

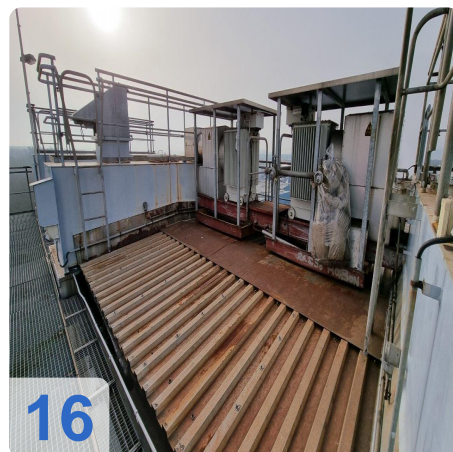
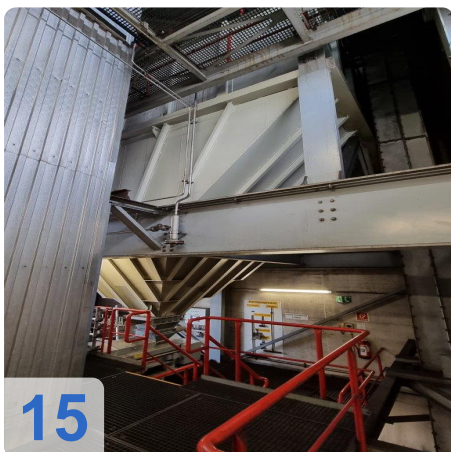
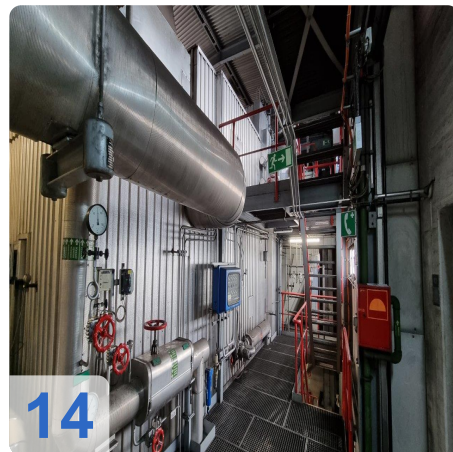




AS

e

ssets







As

e

Assets



18



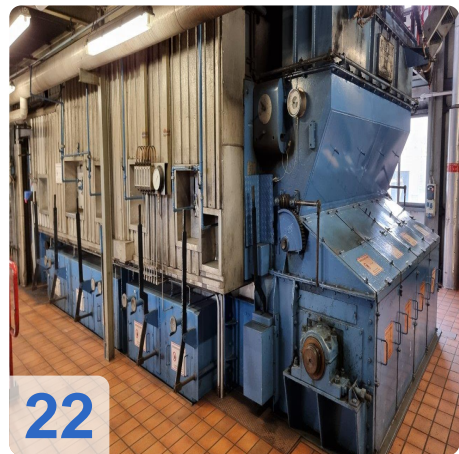
19



20



21



22



23



A

e

Assets



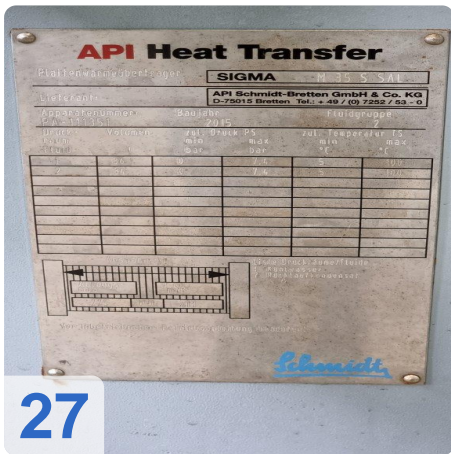
24



25



26



27



28



29



As

e

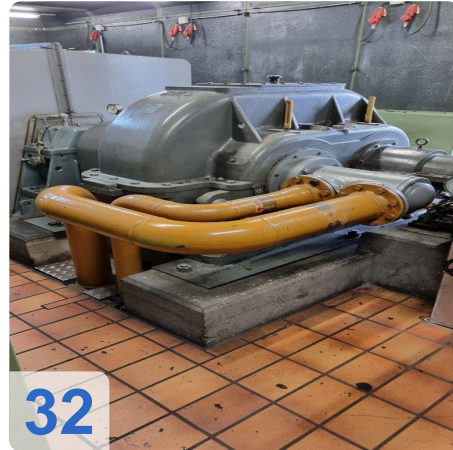
Assets

AEG-KANIS TURBINENFABRIK GMBH			
Turbinen Nr.	18883/000	Schnellschlußdrehzahl	13319min <sup>-1</sup>
Typ	G 16	Zudampfdruck Pabs.	77 bar
Baujahr	1984	Zudampf Temperatur	490°C
Leistung	5275kW	Anzapfdruck Pabs.	bar
Drehzahl	12107min <sup>-1</sup>	Abdampfdruck Pabs.	3,5-6,5 bar
Drehrichtung	links	gesehen in Richtung Turbine-Getriebe-Generator	

30



31



32



33

AEG-Rotaduct®	
Bürstenlose Synchron-Maschine Erreger-Maschine eingebaut	
Typ	DKBL 005/04 2340
Nr.	184
U <sub>N</sub>	500 V
I <sub>N</sub>	100 kVA
cosφ	0,7
n <sub>syn</sub>	1500 rpm
f	50 Hz
I <sub>sc</sub>	100 A
I <sub>cr</sub>	100 A
I <sub>tr</sub>	100 A

34



35



AS

e

Assets



36



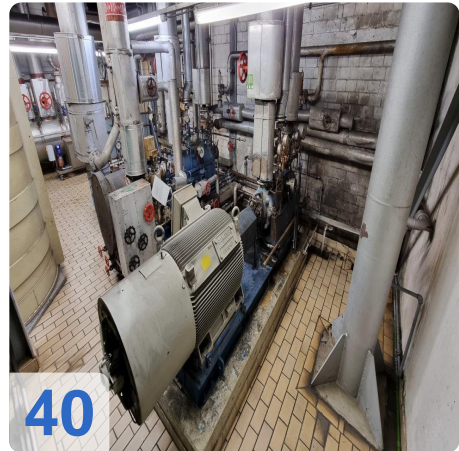
37



38



39



40



41



As

e

ssets





Video:





# Asset-Trade

Assessment & Sale of Used Assets

QR Code for <https://www.asset-trade.de/en/print/pdf/node/7214?la>

**Asset-Trade**

**Assessment and Sale of Used Assets world  
wide**

**Am Sonnenhof 16**

**47800 Krefeld**

**Germany**

**Tel.: +49 2151 32500 33**