



# Asset-Trade

Assessment & Sale of Used Assets

Ref. No.: 1205-02031019

## Overview and Technical Data:

**SPINNER - TTC 300 - 52 SMMCY with  
Barloader**

**SPINNER**

**SPINNER**

Year of Build: Jan 2011



## Description:

### Used SPINNER TTC300-52-SMMCY Siemens with Bar Loader

CNC Control Siemens 840 D

Operating Hours : 42454

Technical specifications:

- Swinging diameter max. 400 mm
- Turning diameter max. 200 mm
- Turning length max 400 mm
- Track (X1/ X2 / Zaxis) 180 / 110 / 450 mm
- Longitudinal path (z) 600 mm
- Speed ??range Main spindle 5,000 rpm
- Rapid traverse (x, z axis) 15/24 m / min
- Spindle 1:
  - 0-5,000 rpm; Power 23 KW, torque 150Nm;
  - C-axis operation
  - Hollow clamping cylinder
  - Bar passage 52mm
- Spindle 2:
  - 0-7,000 rpm; Power 13,8 KW, torque 189Nm;
  - C-axis operation
  - Can be moved to take over spindle 1 with hydraulic hollow clamping cylinder.
- Revolver 1:
  - 12 tool stations for turning, VDI25 radial version
  - Travel X1 = 180mm Z = 450mm
  - 12 stations of the revolver can be driven 0-6000 rpm / 16,5KW / 35Nm, with Y-axis additionally + -40 mm vertically movable for external transverse machining in drilling and milling
- Revolver 2:
  - 12 tool stations for turning, VDI25 radial version
  - Travel X2 = 110mm Z = 450mm
  - 12 stations of the revolver are drivable 0-6000 rpm / 16,5KW / 35Nm,, each individually coupling in working position
- Dimentions (LxWxH) 2500x 1900 x 2165 mm



## Technical Data:

### Technical Data:

Control: SINUMERIK 840D  
Machine Hours: 42454.00 hrs.  
Turning length: 400.00 mm  
Turning diameter: 200.00 mm  
Spindle Speed: 5000.00 rpm  
Tool Holder: VDI 25  
Driven Tools: 24.00  
Tool Capacity: 24 x  
Tailstock: Yes  
Bezel: Yes

### Dimensions and Weight:

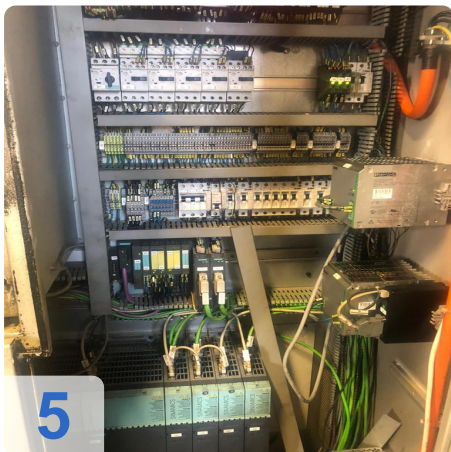
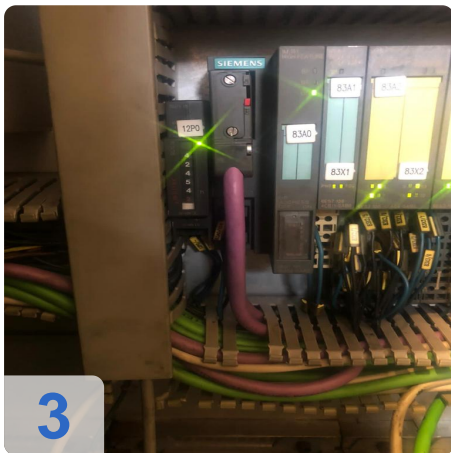
Height: 2165 mm  
Length: 2500 mm  
Width: 1900 mm  
Weight: 4600 kg

### Buyer Information:

Condition: Very good condition  
Available: Sold  
Sold as:  
EXW (Ex Works - Incoterm)  
VAT: 19 %  
Buyers Premium: 16 %  
Location: Turkey



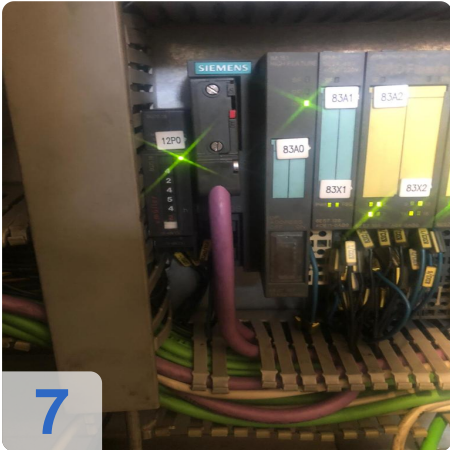
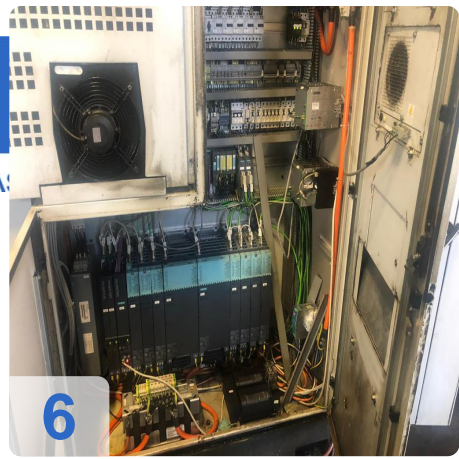
## Images:





As

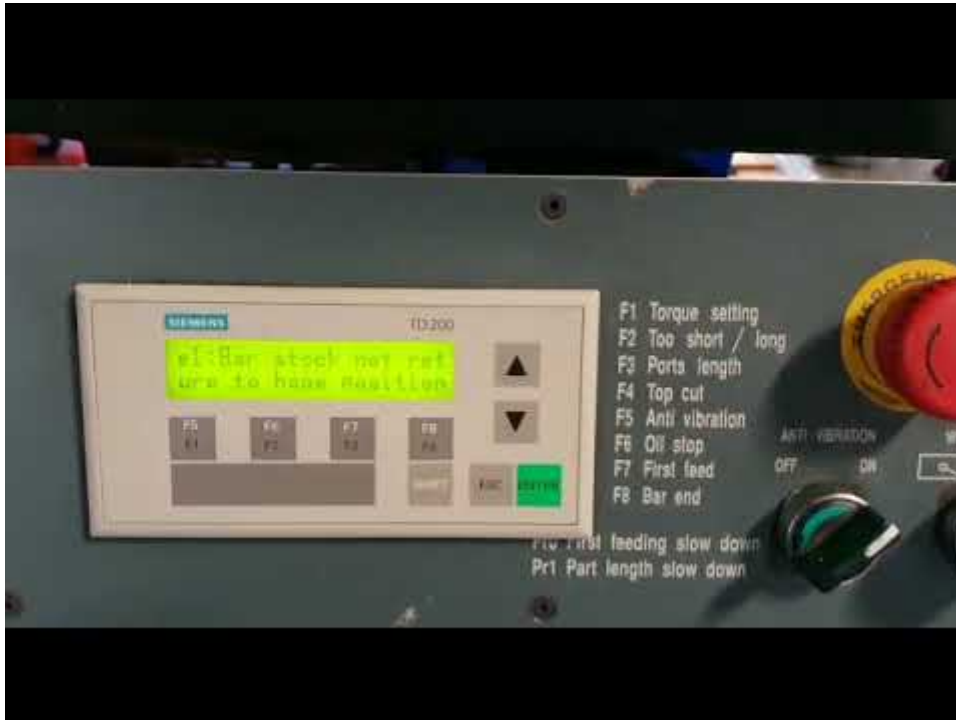
e  
ssets





Video:







# Asset-Trade

Assessment & Sale of Used Assets

QR Code for <https://www.asset-trade.de/en/print/pdf/node/7133>

**Asset-Trade**

**Assessment and Sale of Used Assets world  
wide**

**Am Sonnenhof 16**

**47800 Krefeld**

**Germany**

**Tel.: +49 2151 32500 33**