



Asset-Trade

Assessment & Sale of Used Assets

Ref. No.: 1217-04270928

Overview and Technical Data:

SPINNER - MVC 1100 ShopMill for Sale

SPINNER

SPINNER

Year of Build: Jan 2006



Description:

Used SPINNER MVC 1100 Machine Center

- CNC Control Siemens 810D with ShopMill
- Machine Operating Hours 46311

Technical Data:

- Travels:
 - Axis X: 1100 mm
 - Axis Y: 550 mm
 - Axis Z: 600 mm
- Table length: 1200 mm
- Table width: 600 mm
- Max. part weight: 1000 kg
- Number of tool pockets: 30x
- Spindle taper: ISO40
- Max. spindle speed: 8000 rpm
- Cooling through the spindle: 20 bar
- Dimensions of the machine ca. 3000x2350 m

Machine still in production



Technical Data:

Technical Data:

Control: SINUMERIK 810D
Machine Hours: 46.311 hrs.
Spindle Speed: 8.000 rpm
Tool Holder: SK50
Tool Capacity: 30 x

Travels:

X-Axis: 1.100 mm
Y-Axis: 550mm
Z-Axis: 600 mm

Dimensions and Weight:

Width: 2.350 mm
Length: 3.000 mm
Weight: 8.000 kg

Buyer Information:

Condition: Very good condition
Availability: Immediately
Sold as:
EXW (Ex Works - Incoterm)
VAT: 19 %
Buyers Premium: 16 %
Location: Germany



Images:

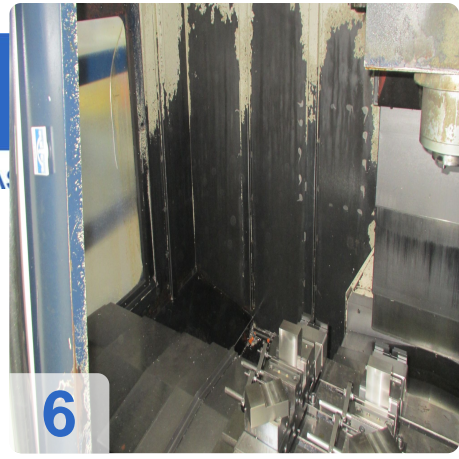




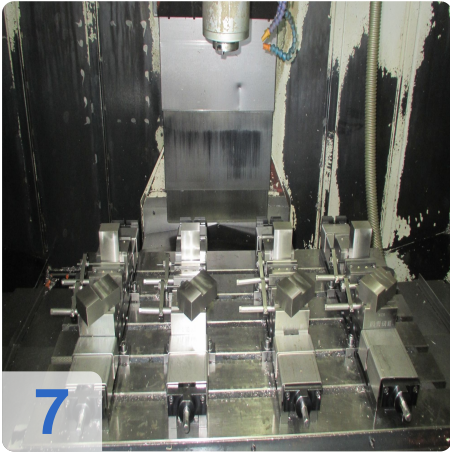
As

e

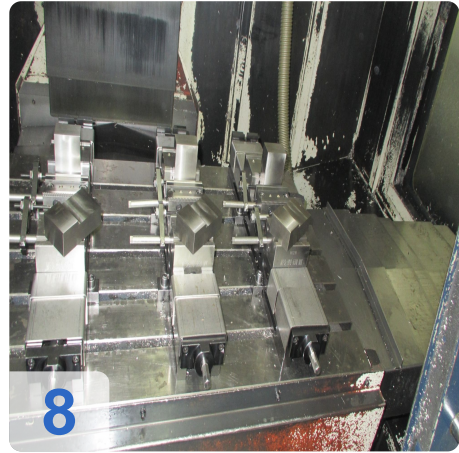
ssets



6



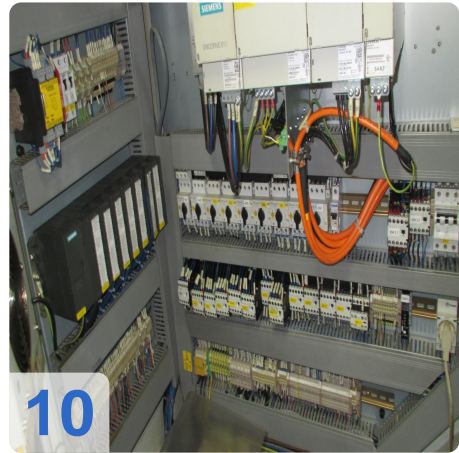
7



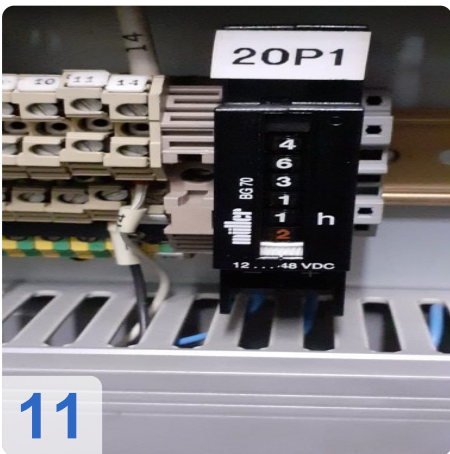
8



9



10



11



Asset-Trade

Assessment & Sale of Used Assets

QR Code for <https://www.asset-trade.de/en/print/pdf/node/7078?la>

Asset-Trade

**Assessment and Sale of Used Assets world
wide**

Am Sonnenhof 16

47800 Krefeld

Germany

Tel.: +49 2151 32500 33