



Asset-Trade

Assessment & Sale of Used Assets

Ref. No.: 1140-01261642

Overview and Technical Data:

LODI - 1600x800x700 Grinding machine

LODI

Year of Build: Jan 2002



Description:

Used LODI 1600x800x700 CNC grinding machine

CNC Control Lodi T2010

Technical Data:

Travels 1600 x 800 x 700 mm

Grinding disk Diameter: 400 mm

Automatic Balancing



Technical Data:

Technical Data:

Control: CNC

Buyer Information:

Condition: Very good condition

Available: Sold

Sold as:

EXW (Ex Works - Incoterm)

VAT: 19 %

Buyers Premium: 16 %

Location: Germany



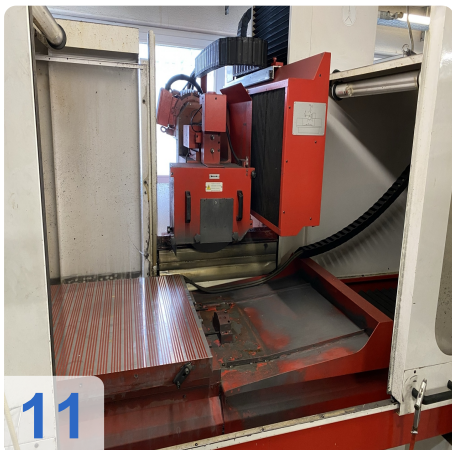
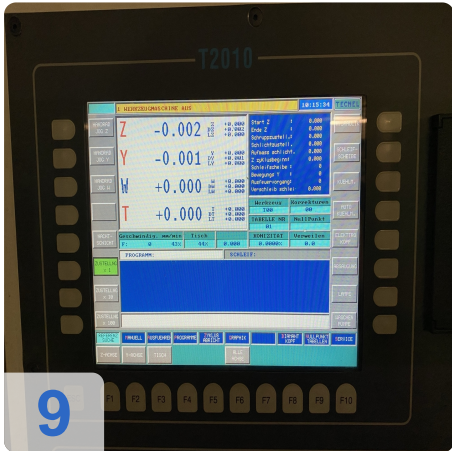
Images:





Asset-Trade

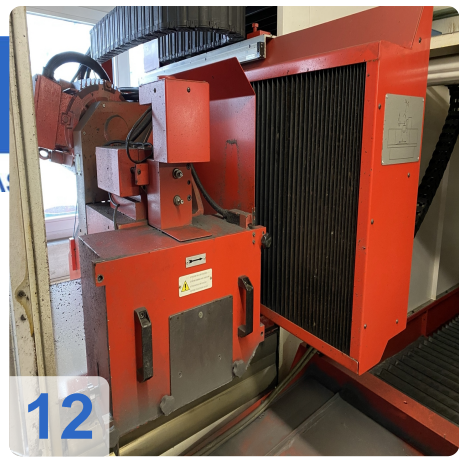
Assets





As

e
Assets

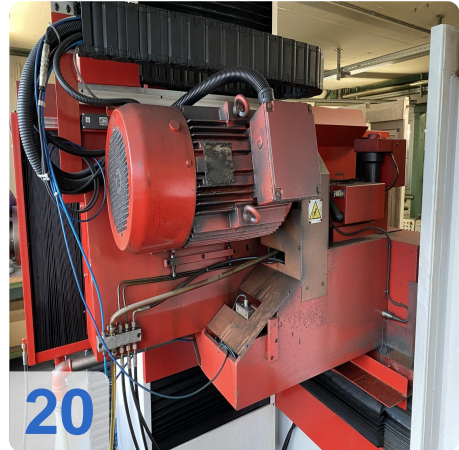
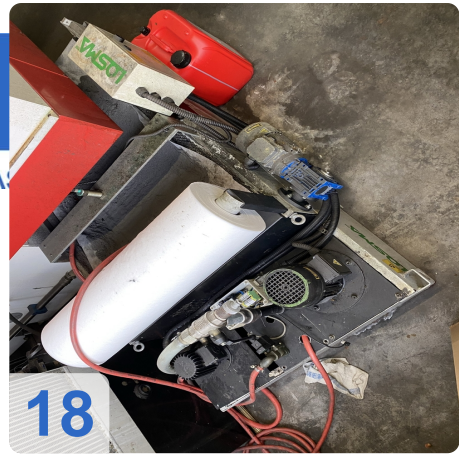




A

e

Assets





Video:





Asset-Trade

Assessment & Sale of Used Assets

QR Code for <https://www.asset-trade.de/en/print/pdf/node/7037>

Asset-Trade

**Assessment and Sale of Used Assets world
wide**

Am Sonnenhof 16

47800 Krefeld

Germany

Tel.: +49 2151 32500 33