



Asset-Trade

Assessment & Sale of Used Assets

Ref. No.: 924-06111039

Overview and Technical Data:

DECKEL - DMC 60S 6 axis bar milling machine

DMG DECKEL

DMG / **MORI SEIKI**

Year of Build: Jan 2003



Description:

Used DECKEL MAHO DMC 60 S 6-axis bar milling machine

CNC control: Sinumerik 840D Powerline - ShopMill.

Hours at 31321 / Spindle Hours 11969

- travels
 - X: 760 mm
 - Y: 460 mm
 - Z: 560 mm
 - A axis NC rotary axis
 - B-axis NC swivel
 - Swiveling head +/-: NC
- Inner cone: HSK-A 63.
- Spindle speed: 20-12,000 revolutions per minute.
- Spindle drive: 28/19 kW
- Tool changer with 60 places.
- tailstock
- Bar loader diameter 10 to 105 mm
- Stakes length 200 - 1100 mm.
- chip conveyor
- Machine dimensions: 6 x 5 x 3 m



Technical Data:

Technical Data:

Control: SINUMERIK 840D
Machine Hours: 31.321 hrs.
Spindle Hours: 11.969 hrs.
Spindle Speed: 12.000 rpm
Tool Capacity: 60 x

Travels:

X-Axis: 760 mm
Y-Axis: 460mm
Z-Axis: 560 mm

Dimensions and Weight:

Weight: 11.000 kg

Buyer Information:

Condition: Very good condition
Availability: Immediately
Sold as:
EXW (Ex Works - Incoterm)
VAT: 19 %
Buyers Premium: 16 %
Location: Germany



Images:





As

e

Assets





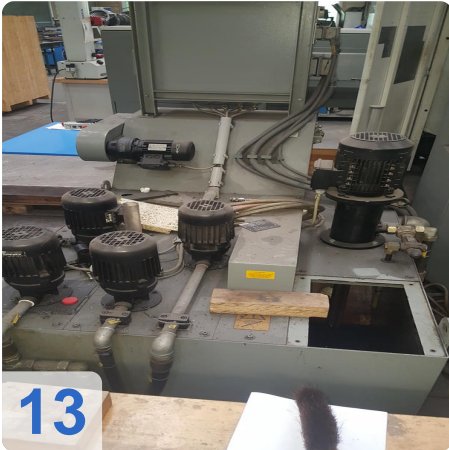
AS

e

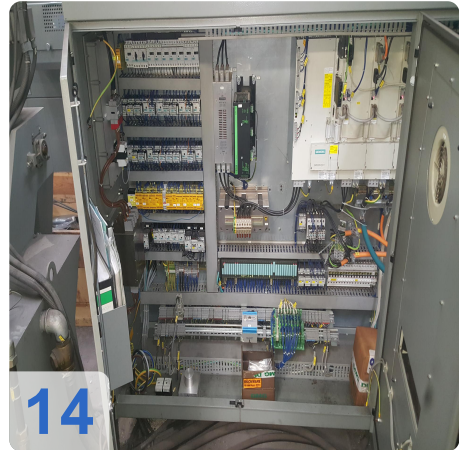
Assets



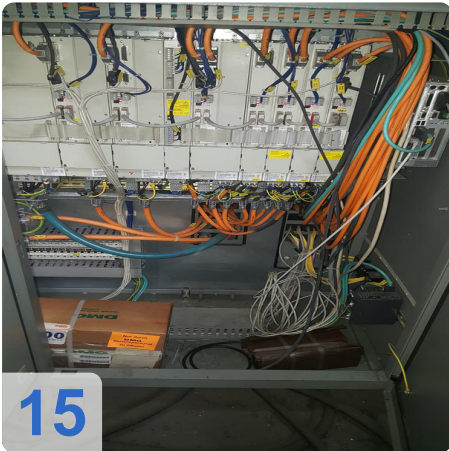
12



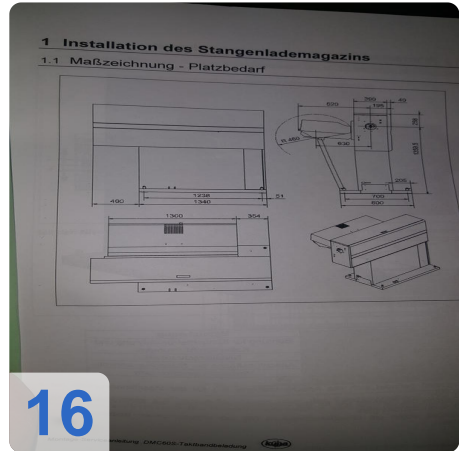
13



14



15



16



17



As

e

Assets



18



19



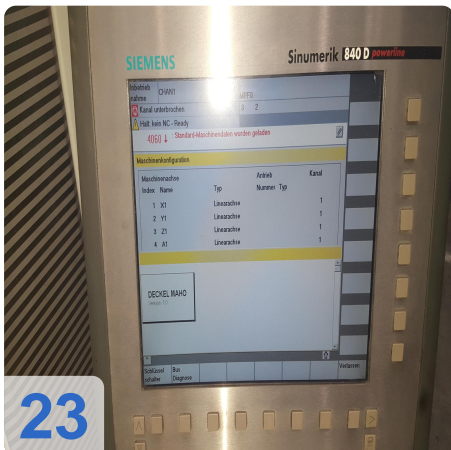
20



21



22



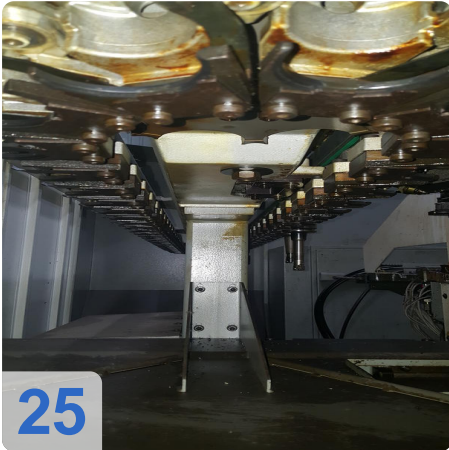
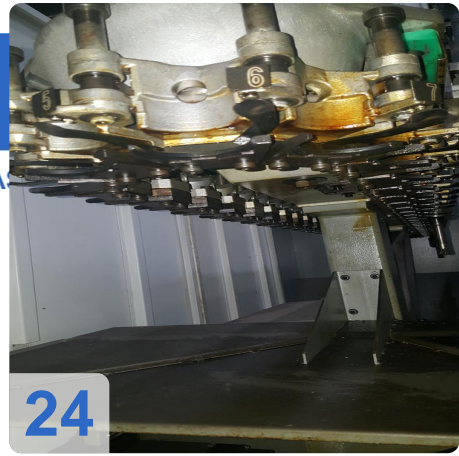
23



A

e

Assets





Asset-Trade

Assessment & Sale of Used Assets



Asset-Trade

**Assessment and Sale of Used Assets world
wide**

Am Sonnenhof 16

47800 Krefeld

Germany

Tel.: +49 2151 32500 33