



Asset-Trade

Assessment & Sale of Used Assets

Ref. No.: 814-04031547



Overview and Technical Data:

**WEISSER - Univertor AS 90L CNC vertical
Pick up lathe**

WEISSER

WEISSER

...designed to be faster

Year of Build: May 1999



Description:

Used WEISSER Univertor AS 90 L CNC Pick up lathe

High-productivity shaft pick-up lathe for large-scale production.

CNC Control Siemens 840D

Technical specifications.

- Rotating diameter 250 mm
- Turning length 400 mm
- Circulation diameter max. 300 mm
- Workpiece length - max. 400 mm
- Feed range x - direction 0.1 - 30.000 mm / min
- Rapid traverse X-axis 30.00 m / min
- Working stroke Z: 500 mm
- Feed range z - Direction 0.1 - 60.000 mm / min
- Rapid travel Z axis 60.00 m / min
- Spindellager diameter 90 mm
- Tool turret 12xSAUTER 680
- Tool holder VDI 40

Further Data

- X1 axis (210 to -30 mm) 30 m / min
- Z1 axis (1302 to 172mm) 60m / min
- Spindle C1 30 - 3800 u / min
- W1 axis (608 to 308 mm) 20 m / min
- Tailstock
- Dimensions 4000 x 2200 x 2500 mm



Technical Data:

Technical Data:

Control: SINUMERIK 840D
Turning length: 400.00 mm
Turning diameter: 250.00 mm
Spindle Speed: 3800.00 rpm
Driven Tools: 12.00
Tool Capacity: 12 x
Tailstock: Yes
Bezel: No

Dimensions and Weight:

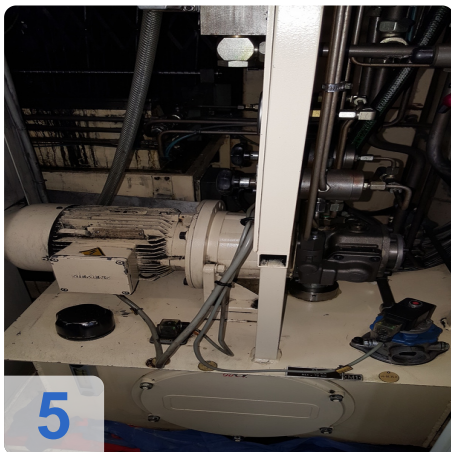
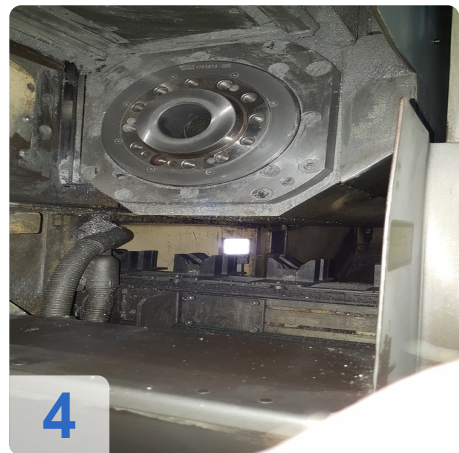
Height: 2500 mm
Length: 4000 mm
Width: 2200 mm
Weight: 11000 kg

Buyer Information:

Condition: Very good condition
Available: Sold
Sold as:
EXW (Ex Works - Incoterm)
VAT: 19 %
Location: Germany



Images:

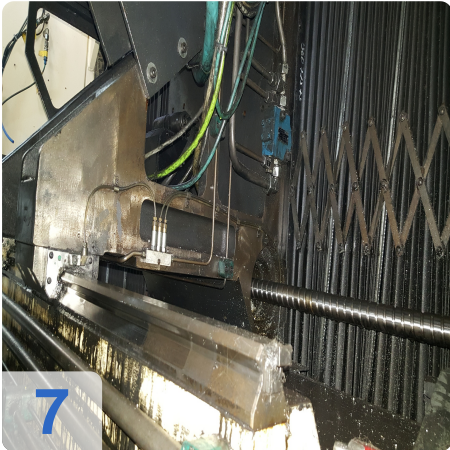
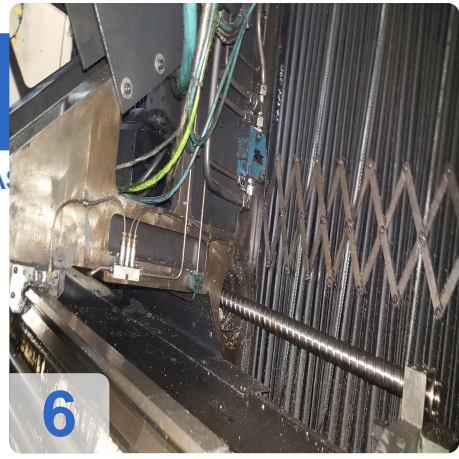




As

e

Assets



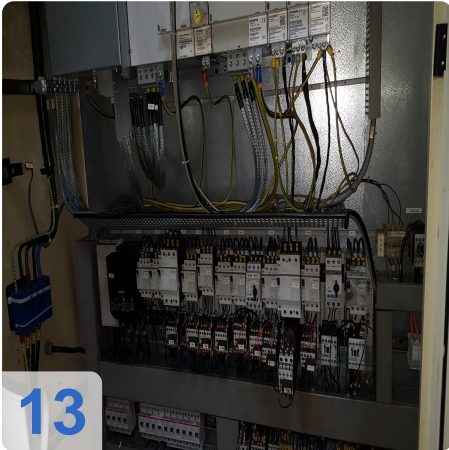


ASSET-TRADE

Assets



12



13



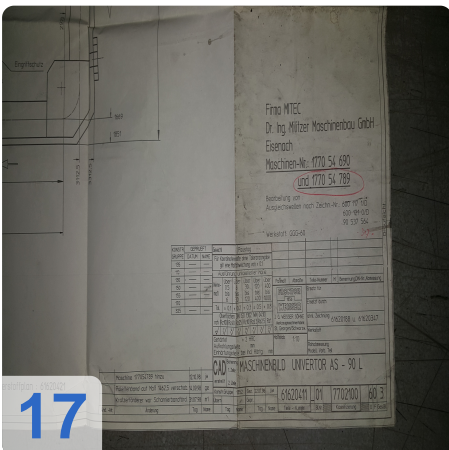
14



15



16

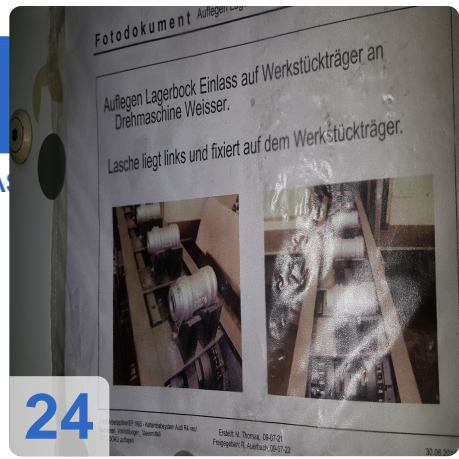


17



Asset-Trade

Assets





Asset-Trade

Assessment & Sale of Used Assets



Asset-Trade

Assessment & Sale of Used Assets



Asset-Trade

**Assessment and Sale of Used Assets world
wide**

Am Sonnenhof 16

47800 Krefeld

Germany

Tel.: +49 2151 32500 33