



Asset-Trade

Assessment & Sale of Used Assets

Ref. No.: 701-01051447

Overview and Technical Data:

**NAKAMURA-TOME - TMC 18 CNC Lathe with
GR 103 loader**

NAKAMURA-TOME



Nakamura-Tome

Year of Build: Jan 1998



Description:

Used NAKAMURA Tome TMC 18 CNC lathe with loading handling GR-103 without loading table

Control Fanuc Serie 21-T

Technical Data

- Swing over bed 16" (400mm)
- Max diameter turned 11.2" (280mm)
- Max turning length 12.2" (305mm)
- X-axis travel 10.1" (254mm)
- Z-axis travel 12" (300mm)
- Spindle nose type A2-6"
- Spindle bore 2.3" (58mm)
- Bar capacity 2" (51mm)
- Tool capacity 10
- Spindle drive motor 15 HP (11.19 KW)
- Electrics 220/440/3/60 HZ
- Spindle speed range 50-4500 RPM
- Approx Gross weight 5,300 LBS
- Approx Dimensions (L x W x H) 64" x 58" x 64"

Others

- Central greasing
- Transformer for voltage conversion
- Chip conveyor
- hydraulic power unit



Technical Data:

Technical Data:

Control: Series 21i
Turning length: 305.00 mm
Turning diameter: 280.00 mm
Spindle Speed: 4500.00 rpm
Tool Capacity: 10 x
Tailstock: No
Bezel: No

Dimensions and Weight:

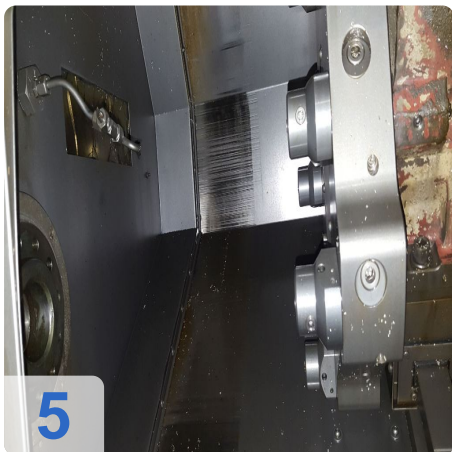
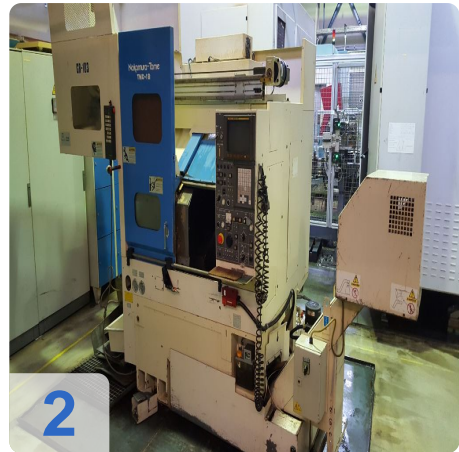
Weight: 2500 kg

Buyer Information:

Condition: Normal wear
Available: On Request
Sold as:
EXW (Ex Works - Incoterm)
VAT: 19 %
Buyers Premium: 15 %
Location: Germany



Images:





AS

e

Assets

Nakamura-Tome TMC-18

6



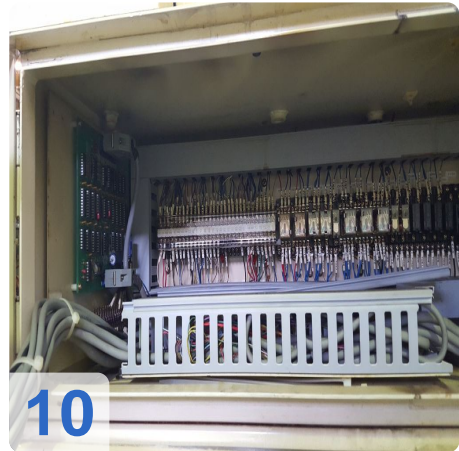
7



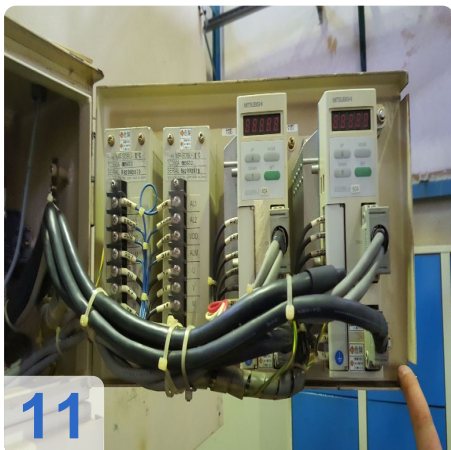
8



9



10



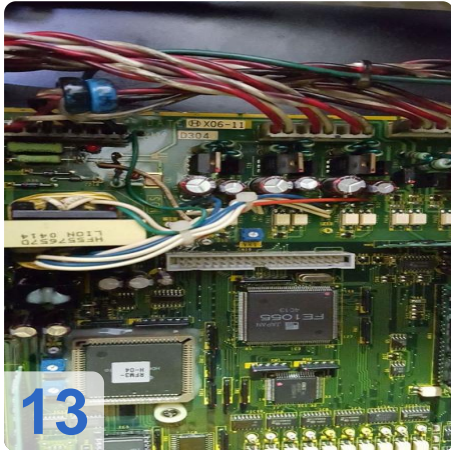
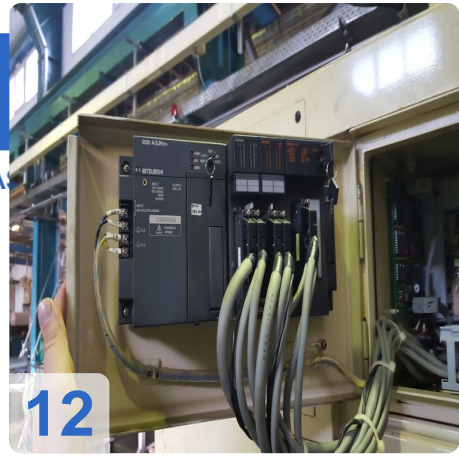
11



A

e

Assets





Asset-Trade

Assessment & Sale of Used Assets



Asset-Trade

Assessment & Sale of Used Assets

QR Code for <https://www.asset-trade.de/en/print/pdf/node/1951?la>

Asset-Trade

**Assessment and Sale of Used Assets world
wide**

Am Sonnenhof 16

47800 Krefeld

Germany

Tel.: +49 2151 32500 33