



Asset-Trade

Assessment & Sale of Used Assets

Ref. No.: 620-05111654

Overview and Technical Data:

LEIFELD - SC 310 CNC Metal Spinning Machinery

LEIFELD



LEIFELD

Year of Build: Jan 2010



Description:

Used LEIDFELD SC 310 Metal spinning Machine

Operating hrs ca 6.250

Specification

- Blank diameter, max. 1,000 mm
- Center distance 1,200 mm
- Rest path, lengthwise 500 mm
- Rest path, across 300 mm
- Rest force, lengthwise 30 kN
- Rest force, across 30 kN
- Ejector stroke 300 mm
- Tailstock spindle stroke 450 mm
- Rotational speed, continuously adjustable 250 – 2,500 min-1
- Spindle DIN 55027, size 8

Programmable & electrically adjustable units, such as:

- Circle centering device
- Peeler
- Processing device BAE/I, BAE/II

Machine configuration or additional equipment

- Circle brace
- Sextuple tool turret
- Lubricant spraying unit
- Roll support with compensation
- Air conditioning for switch cabinet

Required space - Length: 4,300 mm x Width: 2,300 mm x Height: 2,700 mm

Powerful Spinning Center

Leifeld has consistently advanced and perfected its spinning technology and has incorporated the results into innovative machine concepts. The current SC series of Leifeld spinning machines operate via playback CNC-control and are a competitive alternative to



established processes such as deep drawing. Machine efficiency is among the most outstanding features: combinable manufacturing potential, low tooling costs, fast manufacturing processes and a high product range increase considerably the degree of utilization.



Technical Data:

Technical Data:

Control: CNC
Machine Hours: 6250

Dimensions and Weight:

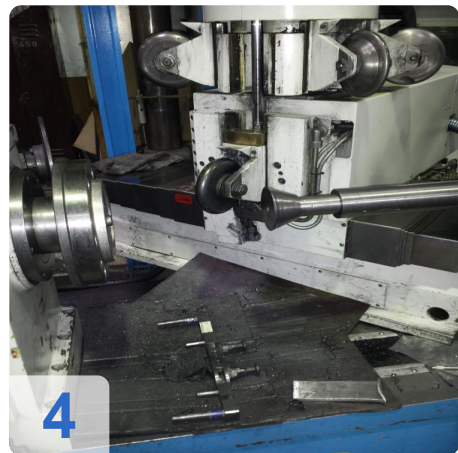
Height: 2.700 mm
Length: 4.300 mm
Width: 2.300 mm
Weight: 9.000 kg

Buyer Information:

Condition: Like New
Available: Sold
Sold as:
EXW (Ex Works - Incoterm)
VAT: 19 %
Buyers Premium: 15 %
Location: Germany



Images:





As

e

ssets



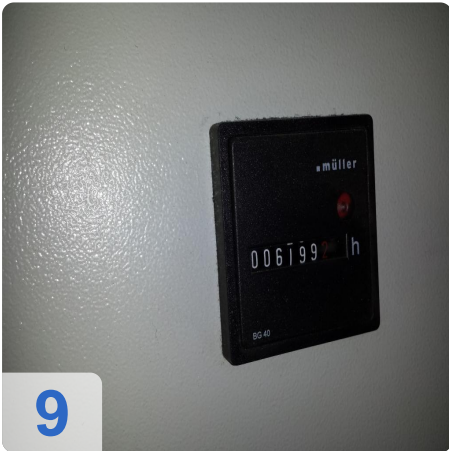
6



7



8



9



10



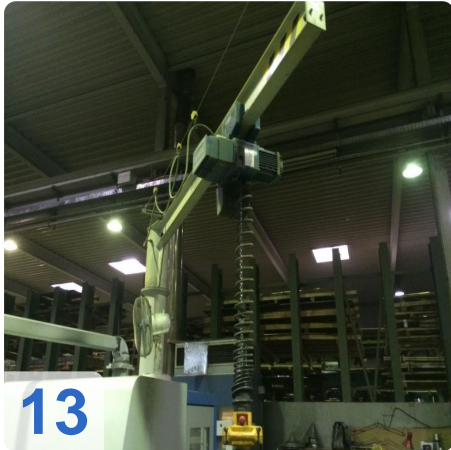
11



As

e

ssets





Video:





Asset-Trade

Assessment & Sale of Used Assets

QR Code for <https://www.asset-trade.de/en/print/pdf/node/1800>

Asset-Trade

**Assessment and Sale of Used Assets world
wide**

Am Sonnenhof 16

47800 Krefeld

Germany

Tel.: +49 2151 32500 33