



Asset-Trade

Assessment & Sale of Used Assets

Ref. No.: 603-0191148

Overview and Technical Data:

KITAMURA - Mycenter 3XiF vertical machining center 4 axes

KITAMURA



Year of Build: Jan 2007



Description:

Used KITAMURA 3X iF SP vertical machining center with pallets 2 at 180 ° turntable assembly

Scraped precision flat guides; Ideal for steel processing; Spindle and cooling bed

Spindle ON 8300 HRS

Machine ON 19.000 HRS

- Copntrol Fanuc 16 iMB
- Speed range 20-20,000 U / min 11 / 7.5 KW
- Travel X 760 mm
- Travel Y 455 mm
- Travel Z 460 mm
- Table load 500kg
- 30-station tool changer with double arm BT 40
- Rapid X 50 m / min.
- Rapid Y 50 m / min.
- Rapid Z 36 m / min.
- Tool change time T T / C-C 1.2 / 3.0 sec.
- 2-way rotary pallet changer
- spindle cooling
- Internal coolant Knoll Turbo 120 bar
- chip conveyor
- Interface 4 axis for both pallets
- 2 piece 4th axis Nikken CNZ 105F / A
- Hydra coolant cooling system
- Dimensions 3360x 2588x 2965 mm



Technical Data:

Technical Data:

Control: Series 16i
Machine Hours: 19.000 hrs.
Spindle Hours: 8.300 hrs.
Spindle Speed: 20.000 rpm
Tool Capacity: 30 x

Travels:

X-Axis: 760 mm
Y-Axis: 455mm
Z-Axis: 460 mm

Dimensions and Weight:

Height: 2.965 mm
Width: 2.588 mm
Length: 3.360 mm
Weight: 7.400 kg

Buyer Information:

Condition: Very good condition
Availability: Sold
Sold as:
EXW (Ex Works - Incoterm)
VAT: 19 %
Buyers Premium: 15 %
Location: Germany



Images:

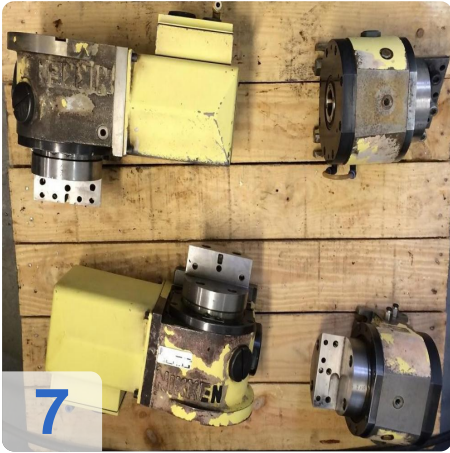




A

e

Assets

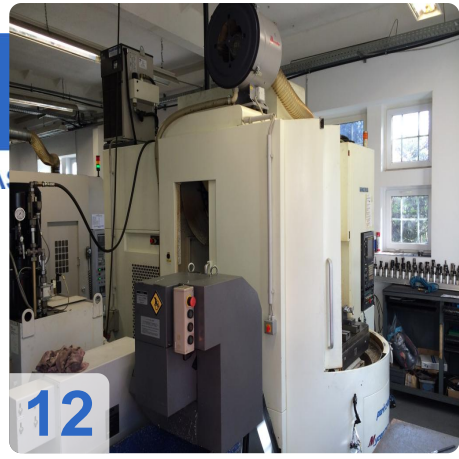




A

e

ssets



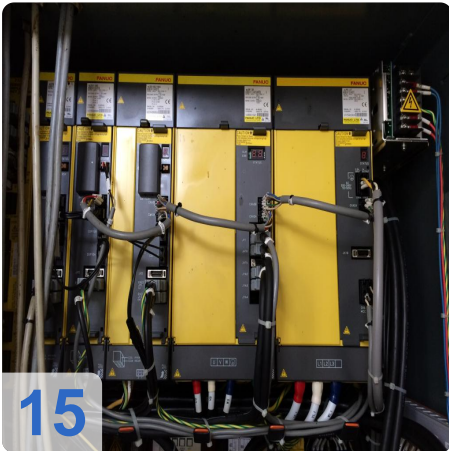
12



13



14



15



16



17



Video:





Asset-Trade

Assessment & Sale of Used Assets

QR Code for <https://www.asset-trade.de/en/print/pdf/node/1762>

Asset-Trade

**Assessment and Sale of Used Assets world
wide**

Am Sonnenhof 16

47800 Krefeld

Germany

Tel.: +49 2151 32500 33