



Asset-Trade

Assessment & Sale of Used Assets

Ref. No.: 505-01291120

Overview and Technical Data:

REISHAUER - RZ 701 CNC Gear Grinding Machine

REISHAUER
REISHAUER

Gear Grinding Technology

Year of Build: Jan 1988



Description:

Used REISHAUER RZ 701 CNC Gear Grinding Machine-Vertical

- max. wheel diameter 700 mm
 - gear width 250 mm
 - max. module 7
 - min. module 0,5
 - root circle diameter 34 mm
 - slide stroke 300 mm
 - clamping length 255-570 mm
 - workpiece weight 300 kg
 - max. number of teeth 600
 - min. number of teeth 10
 - pressure angle 10 - 45 °
 - max.helical angle 30 °
 - grinding worm dia. 270 - 400 mm
 - width of grinding worm 84 / 104 mm
 - feeds per workpiece rotation 0,6 - 3,0 mm
 - adjustment per stroke 0,01 - 0,08 mm
 - total adjustment 1,2 mm
 - tangential adjustment 80 mm
 - turning speed of the grinding worm 1100 - 1650 U/min
 - electrics - voltage/frequency 380 / 50 V/Hz
 - 30 kw
 - dimensions of the machine ca. 5,7 x 6,0 x 2,3 m
-
- profiling module AM



Technical Data:

Technical Data:

Control: CNC

Dimensions and Weight:

Weight: 8.000 kg

Buyer Information:

Condition: Very good condition

Available: Sold

Sold as:

EXW (Ex Works - Incoterm)

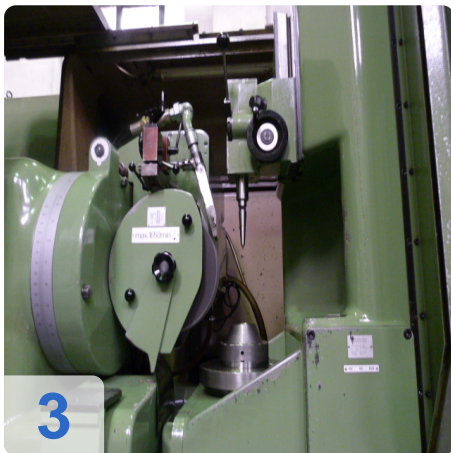
VAT: 19 %

Buyers Premium: 15 %

Location: Poland



Images:





As

e

Assets



6



7



8



9



10



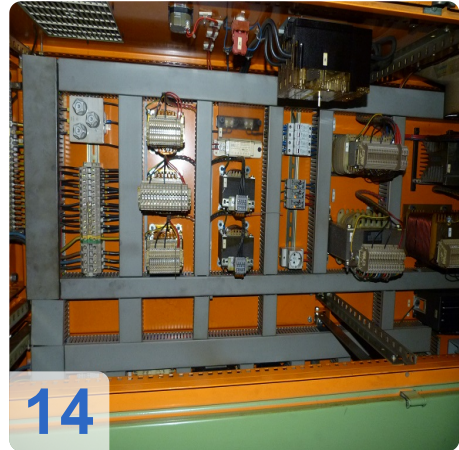
11



As

e

ssets





As

e

Assets



18



Video:





Asset-Trade

Assessment & Sale of Used Assets



Asset-Trade

**Assessment and Sale of Used Assets world
wide**

Am Sonnenhof 16

47800 Krefeld

Germany

Tel.: +49 2151 32500 33