



# Asset-Trade

Assessment & Sale of Used Assets

Ref. No.: 428-07081559

## Overview and Technical Data:

**UNISIGN - UNIMAC 5**

**UNISIGN**



Year of Build: Jan 1997



## Description:

### **UNISIGN UNIMAC 5 horizontal machining center for crankshaft machining**

Siemens 840 Control

#### Specifications:

- Travel x = 1310 mm
- Travel y = 850 mm
- Travel z = 850 mm
- Twin pallet
- Rapid traverse x, y, z - axis 24,000 mm / min.
- Speed ??range 60 - 10000 mm / min. 120Nm
- Main 17kw
- Spindle lower diameter D = 60 mm
- Chain magazine + Number of tools 51
- SK 40
- Tool diameter 70 mm
- Dimentions 8x4x3.5

The machines of the series UNIMAC designed specifically for high speed machining of complex workpieces. The machining of precision parts of complex 3D shapes is particularly economically possible with these machines. Great emphasis was placed on the high dynamic performance of the machine. The specially developed to meet these requirements stand allows the highly dynamic machine characteristics, while meeting the highest accuracy requirements. UNIPRO is a synonym for high productivity and great cutting performance.



## Technical Data:

### Technical Data:

Control: SINUMERIK 840D  
Spindle Speed: 10.000 rpm  
Tool Capacity: 51 x

### Travels:

X-Axis: 1.310 mm  
Y-Axis: 850mm  
Z-Axis: 850 mm

### Dimensions and Weight:

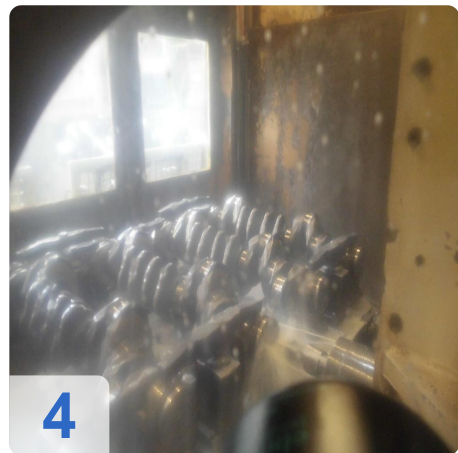
Weight: 22.000 kg

### Buyer Information:

Condition: Very good condition  
Availability: Q1  
Sold as:  
EXW (Ex Works - Incoterm)  
VAT: 19 %  
Buyers Premium: 15 %  
Location: Germany



## Images:

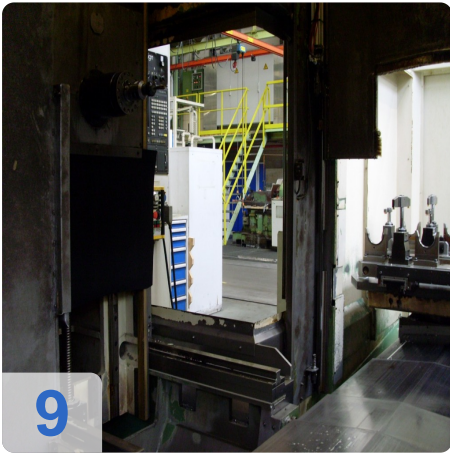
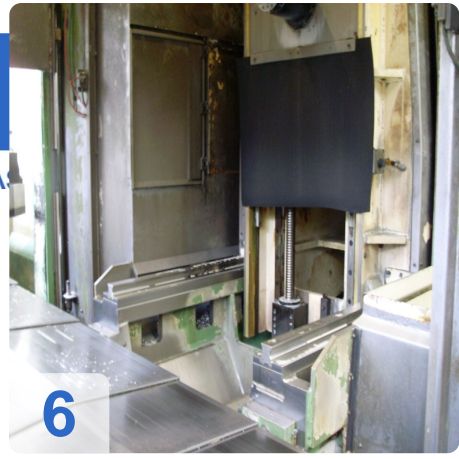




As

e

ssets





A



e

Assets

12



# Asset-Trade

Assessment & Sale of Used Assets

QR Code for <https://www.asset-trade.de/en/print/pdf/node/1552?la>

**Asset-Trade**

**Assessment and Sale of Used Assets world  
wide**

**Am Sonnenhof 16**

**47800 Krefeld**

**Germany**

**Tel.: +49 2151 32500 33**