



Asset-Trade

Assessment & Sale of Used Assets

Ref. No.: 1426-06291612

Overview and Technical Data:

**SCHNEEBERGER Gemini DMR - AWL 5-Axis
CNC tool grinder**

GEMINI

SCHNEEBERGER

SCHNEEBERGER

SCHNEEBERGER

Year of Build: Jan 2008



Description:

Used SCHNEEBERGER Gemini DMR - AWL

5 axes CNC tool grinding machine

CNC control Fanuc 160i MB

Technical data

- Travels - Glass scales X, Y, Z
 - X-axis 400 mm / 20'000 mm/min
 - Y-axis 300 mm / 5'000 mm/min
 - Z-axis 280mm / 20'000 mm/min
 - Resolution X/Y/Z : 0,0001 mm
- Centre height: 210 mm
- Spindle:
 - Spindle speed: 10000 Rpm
 - Drive power 15KW
 - Grinding wheel holder: HSK 50
 - Wheel diameter up to: 50-250 mm
 - Grinding wheel changer 8 pieces
 - Grinding wheel button
- Other
 - CO2 fire extinguishing system
 - 3D tracer
 - Hydr. voltage ISO 50
 - Network connection
 - Interface to Zoller measuring devices
- Grinding software Standard-WZ
 - Kennermetal-Hertel SE, TX, TF, Unidrill B9XX
 - Sandvik
 - Profile tools
 - Woodworking tools
 - 3D simulation

The SCHNEEBERGER GEMINI DMR is a high-performance 5-axis CNC grinding machine with high performance and autonomy for the serial production of end mills, drills, profile



tools, profile grinding of pinion cutters and hob peeling cutters, as well as production grinding tasks such as profile grinding and flat grinding.

The gemini is the 5-axis CNC grinding machine for the serial production of cutting tools. Complete processing around OD and face, up to 300 mm cutting length, diameter up to 300 mm, maximum workpiece length that can be clamped 400 mm.

Cutting tools such as end mills, ball nose cutters for mold making, high-performance drills, reamers and profile end mills are all part of the standard requirement.

There are specific software packages, grinding processes and clamping systems for the production of shaper cutters with highly dynamic segmented hob grinding, the regrinding of gear cutting tools, end mills, shaper cutters and bevel gear cutters.

CNC grinding of knives for the paper, foodstuffs and plastics industries, profile grinding, cylindrical grinding and surface grinding.



Technical Data:

Technical Data:

Control: Series 16i

Dimensions and Weight:

Height: 220 mm

Length: 3.000 mm

Width: 2.500 mm

Weight: 8.000 kg

Buyer Information:

Condition: Very good condition

Available: Sold

Sold as:

EXW (Ex Works - Incoterm)

VAT: 19 %

Buyers Premium: 18 %

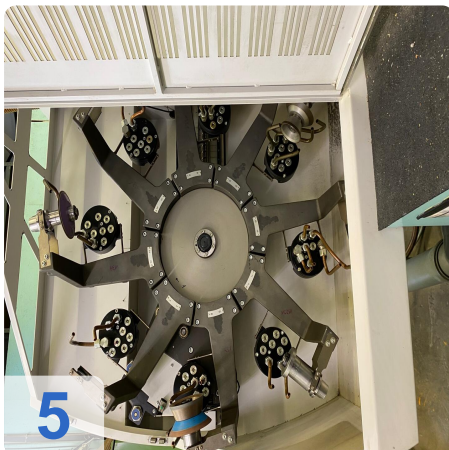
Location: Germany



Asset-Trade

Assessment & Sale of Used Assets

Images:

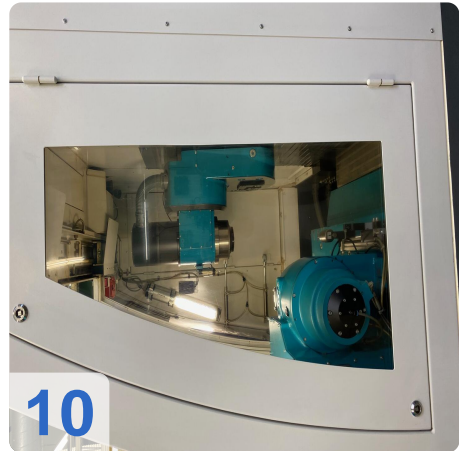
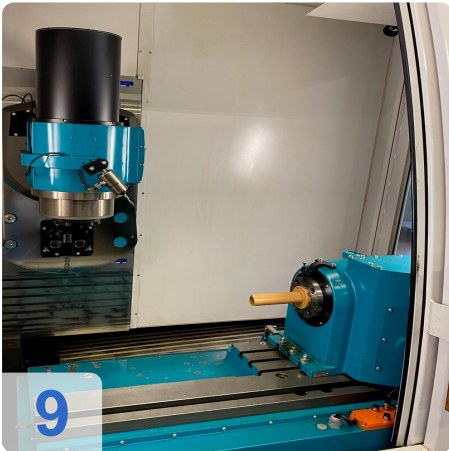


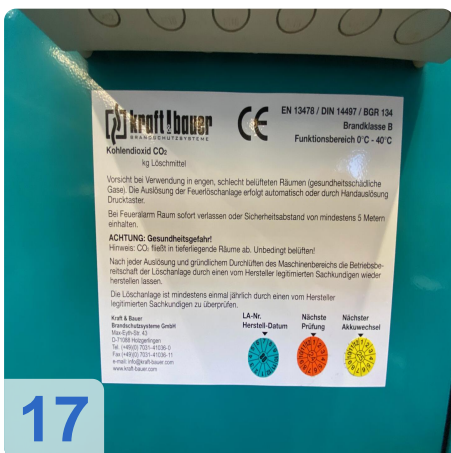
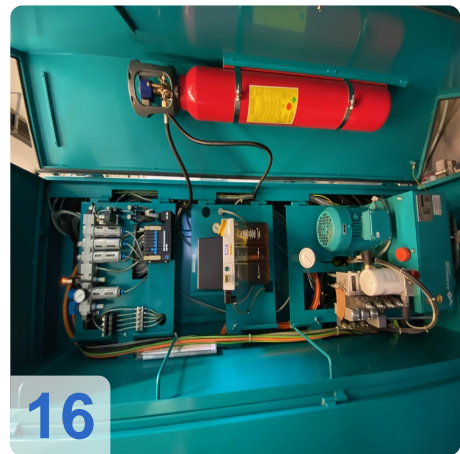
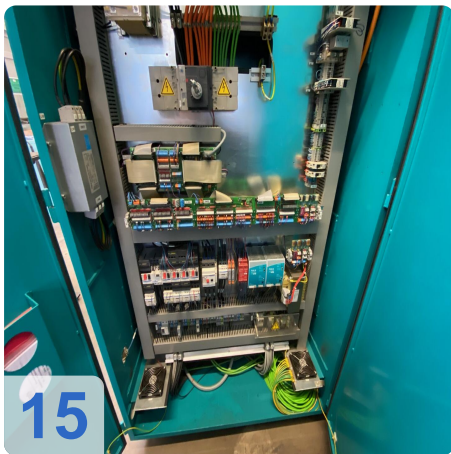


Assets

e

Assets







As

e

assets

18

| | | | |
|-----------------------------------|--------------------|-----------------------|--------|
| TYP | DMR GENN. ABL. | SERIE NR. | 81 DMR |
| Maßstab | 21178 | Blatt Nr. | 647264 |
| Skizze | 2008 | Abweich. Blatt | |
| Spannung | 1000V | | |
| STROMART / KIND OF CURRENT | 3L + N | 0010 Hz | |
| BETRIESSPANNUNG / WORKING VOLTAGE | 0 x 400 VAC | | |
| STEUERSPANNUNG / CONTROL VOLTAGE | 230-240VAC; 24 VDC | | |
| LEISTUNG / RATING | 450VA | 7.37kW | |
| NENNSTROM / RATED CURRENT | 16A | 30 A | |
| STROMLAUFPLAN / CIRCUIT DIAGRAM | NR. | 00019-011V 00019-020V | |



Asset-Trade

Assessment & Sale of Used Assets

Video:





Asset-Trade

Assessment & Sale of Used Assets

QR Code for <https://www.asset-trade.de/en/print/pdf/node/7742>

Asset-Trade

**Assessment and Sale of Used Assets world
wide**

Am Sonnenhof 16

47800 Krefeld

Germany

Tel.: +49 2151 32500 33