



# Asset-Trade

Assessment & Sale of Used Assets

Ref. No.: 1347-11291553

## Overview and Technical Data:

**DEUTZ Diesel Emergency Generator 430kw 500 kVA**

**NOT DEFINED**



Multiple Makes or Not Defined

Year of Build: Jan 2002



## Description:

### **Used diesel emergency generators**

### **DEUTZ BF 8 M 1015 CP with Leroy-Sommer LSA 47.2 low voltage generator 500 kVA**

Operating hours approx 121,15



## Technical data Deutz:

- Number of cylinders 8
- Displacement 15.9 l
- Design Vee
- max. power 430 kW
- Continuous power: 400kW
- RPM 2100
- Torque at RPM from-to 2720 Nm
- Tier Min. EU II
- Tier Max. EU III
  - Aspiration T
- Dead weight 1060 kg
- Cooling type water
- Bore 132 mm

Modern water-cooled four-stroke 8-cylinder engines in V-configuration.

Exhaust turbocharger and exhaust pipes water-cooled.

Gear-driven power take-offs.

Modern fuel injection system with mechanical governor.

Electronic governor for on-board units.

Intercooling by means of engine coolant.

Innovative multi-parallel cooling system.

Compact dimensions.

## Technical data Leroy-Sommer LSA 47.2

- Installation of power generator 500 kVA
- Installation of exhaust pipe St 37N2A, DN 200 incl. exhaust silencer and insulation
- Installation of 1 day tank 1000 l, make: ADAM
- Assembly of 1 storage tank GfK 2.000 l incl. filling and venting pipe,
- Oil supply line from the storage tank to the day tank, type Flexwell FSR 16/30, double-walled, incl. leakage indicator device.
- Installation of the supply and exhaust air system
- Installation of control cabinet and control cable

## Technical data Cooling Unit

Honeycomb cooler with closed cooling circuit

- Fan drive: mechanical
- Air flow rate: 22,000 m<sup>3</sup>/h
- Cooling liquid: water and glycol
- Capacity: approx. 80 ltr.

## Storage:

Engine and generator are elastically mounted by means of insulators on a base frame made of sectional steel.

- The transmission of structure-borne noise is below 1 O Hz.
- Machine noise inside the installation room: 102 dB(A)
- Hearing protection is provided for the operating personnel.
- Machine noise outside the room: approx. 65 dBA



## Technical Data:

### Technical Data:

Control: CNC  
Machine Hours: 122

### Buyer Information:

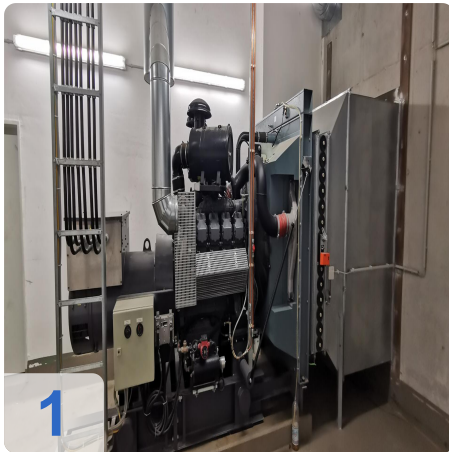
Condition: Very good condition  
Available: Q1  
Sold as:  
EXW (Ex Works - Incoterm)  
VAT: 19 %  
Buyers Premium: 16 %  
Location: Germany



# Asset-Trade

Assessment & Sale of Used Assets

## Images:



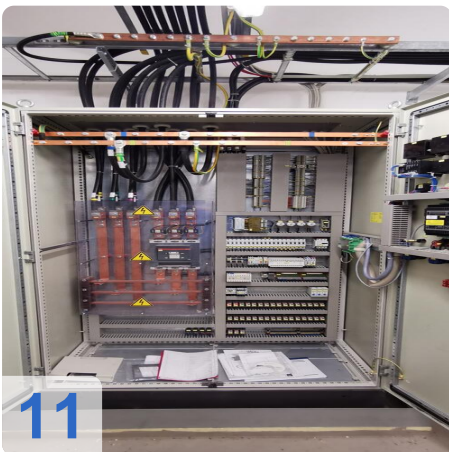
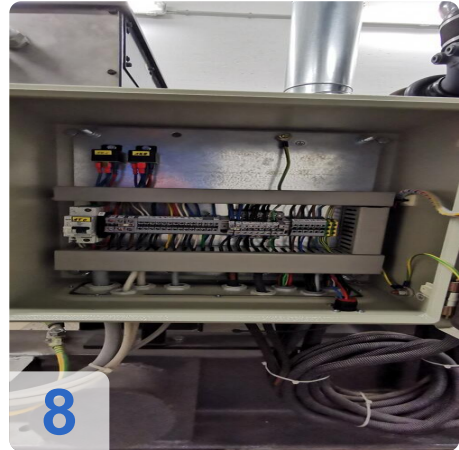




As

e

ssets

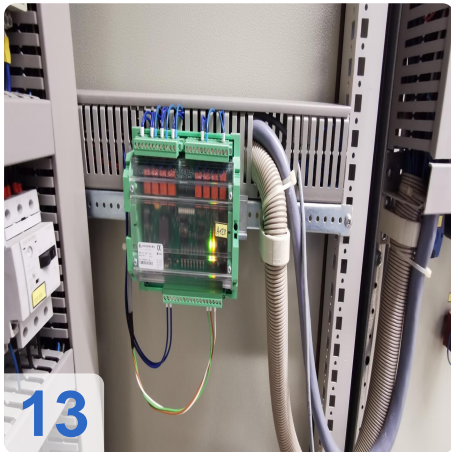
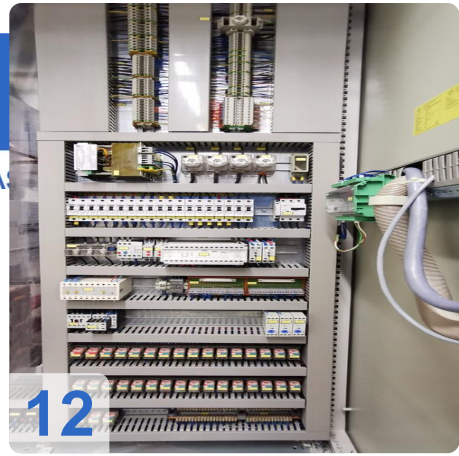




As

e

ssets





# Asset-Trade

Assessment & Sale of Used Assets

QR Code for <https://www.asset-trade.de/en/print/pdf/node/7345>

**Asset-Trade**

**Assessment and Sale of Used Assets world  
wide**

**Am Sonnenhof 16**

**47800 Krefeld**

**Germany**

**Tel.: +49 2151 32500 33**