



# Asset-Trade

Assessment & Sale of Used Assets

Ref. No.: 522-05231308

**DMG**

**DMU 50 eVo linear  
DECKEL MAHO**

## Overview and Technical Data:

**DECKEL - DMU 50 evo linear 5 Axis fully  
equipped**

**DMG DECKEL**

**DMG / MORI SEIKI**

Year of Build: Jan 2008



## Description:

### **Used DMG DMU 50 Evo linear - 5 axis simultaneous in full equipment**

- Control: Heidenhain iTNC 530 HSCI
- Travels X / Y / Z 500x 450 x 400 mm
- Rapid traverse X / Y / Z 24 m / min
- B- axis swivel unit , simultaneously controllable
- C- axis rotary table 0.001 ° , simultaneously controllable
- Tool changer: 120x chain magazine
- Tool: HSK 63 DIN 69871
- Main Spindle : 18.000 1/min
- Coolant system : yes , 40bar IKZ with belt filter system

#### Further details

- documentation
- Clamping hydraulic
- Robotic preparation
- 3D QuickSet
- 3D probe TS649
- BLUM laser
- Rotating Lens
- DMG Netservice

The DMU 50 opened a new era in workshop, training, laboratory and machine tools, jigs and fixtures .

These CNC universal milling machine is characterized by innovative engineering technology. Highlights such as digital drives in all axes , rapid traverse up to 24 m / min and motor spindles up to 18,000 min-1 put the DMU 50 increased dynamism . In addition to the standard fixed table are



more table options in the form of a manual , a motorized swivel rotary table with hydraulic clamping and a simultaneous table are available. The modern cross-slide design with inherently rigid , ribbed cast frame provides a base which provides noticeably more precision. Modern control technology with DMG Ergoline ® Control , 19 " screen and 3D - software guarantees highest processing speed , precision and reliability . DMG MORI offers the DMU 50 is the ideal and affordable entry into the world of 5 pages - to 5 - axis simultaneous machining .

## Highlights DMU 50

- Maximum flexibility - Variable table options from rigid to swivel rotary table for 5 - axis simultaneous machining
- High workpiece weights and maximum accuracy by integrated swivel rotary table with large bearing diameters in both rotary axes
- Optimum use of space - Excellent accessibility to the work space , free chip flow and steep wall slopes , large work space with small machine dimensions
- Powerful motor spindle with up to 18,000 min <sup>-1</sup> ( option ), 130 Nm and 35 kW ( 40 % DC)



## Technical Data:

### Technical Data:

Control: TNC 530  
Spindle Speed: 18.000 rpm  
Tool Capacity: 120 x

### Travels:

X-Axis: 500 mm  
Y-Axis: 450mm  
Z-Axis: 400 mm

### Buyer Information:

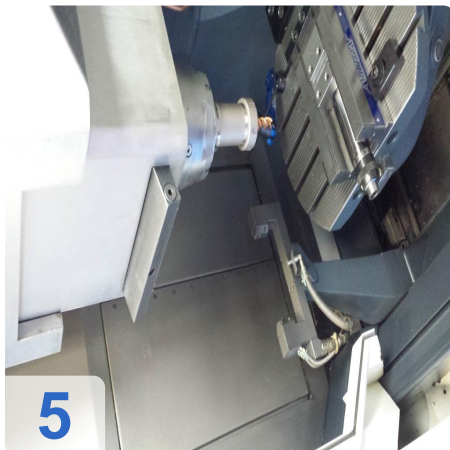
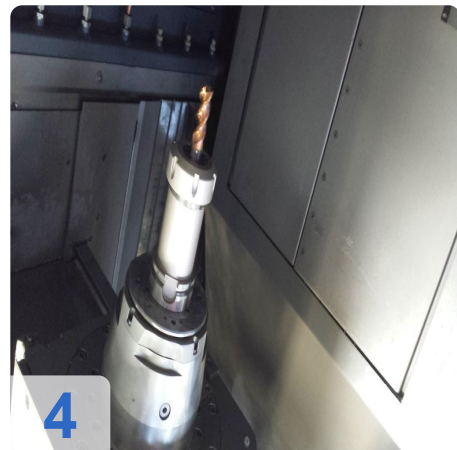
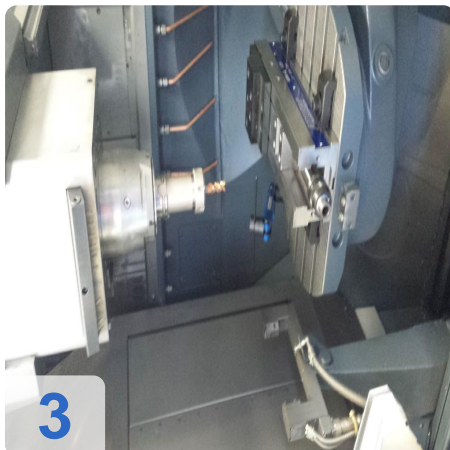
Condition: Very good condition  
Availability: Sold  
Sold as:  
EXW (Ex Works - Incoterm)  
VAT: 19 %  
Buyers Premium: 15 %  
Location: Germany



# Asset-Trade

Assessment & Sale of Used Assets

## Images:



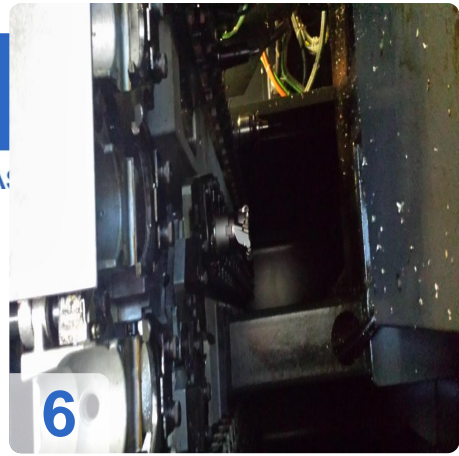




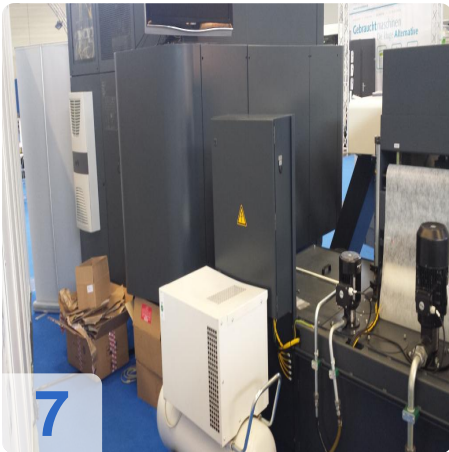
As

e

assets



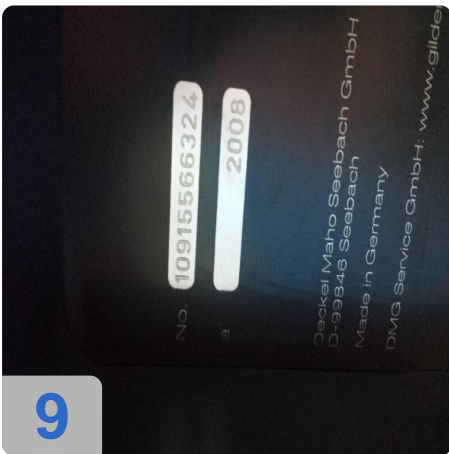
6



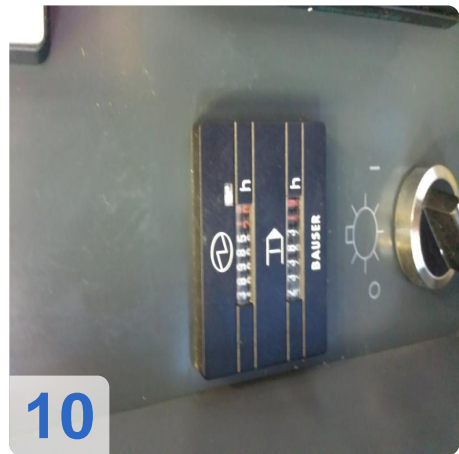
7



8



9



10



# Asset-Trade

Assessment & Sale of Used Assets

Video:





# Asset-Trade

Assessment & Sale of Used Assets

QR Code for <https://www.asset-trade.de/en/print/pdf/node/1709>

**Asset-Trade**

**Assessment and Sale of Used Assets world  
wide**

**Am Sonnenhof 16**

**47800 Krefeld**

**Germany**

**Tel.: +49 2151 32500 33**